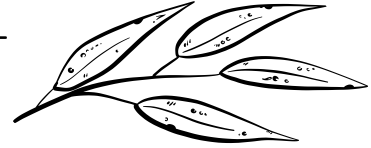


NAME: _____

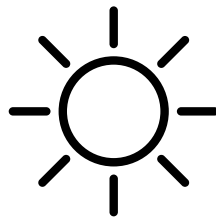
My tree's common name is: _____



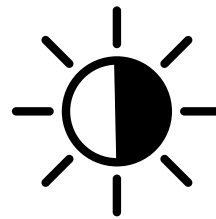
My tree's scientific name is: _____



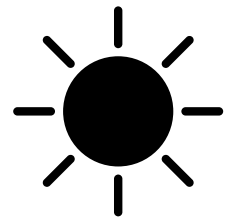
I will pick a good place to plant my tree. My tree needs (circle one)



Full sun



Partial sun



Full shade



with enough room to grow _____ ft. tall
and _____ ft wide

I will dig a hole _____ inches deep and put my tree inside.



I will water my tree every _____ days.

Circle the days of the week that you will water your tree.

Sunday Monday Tuesday Wednesday

Thursday Friday Saturday



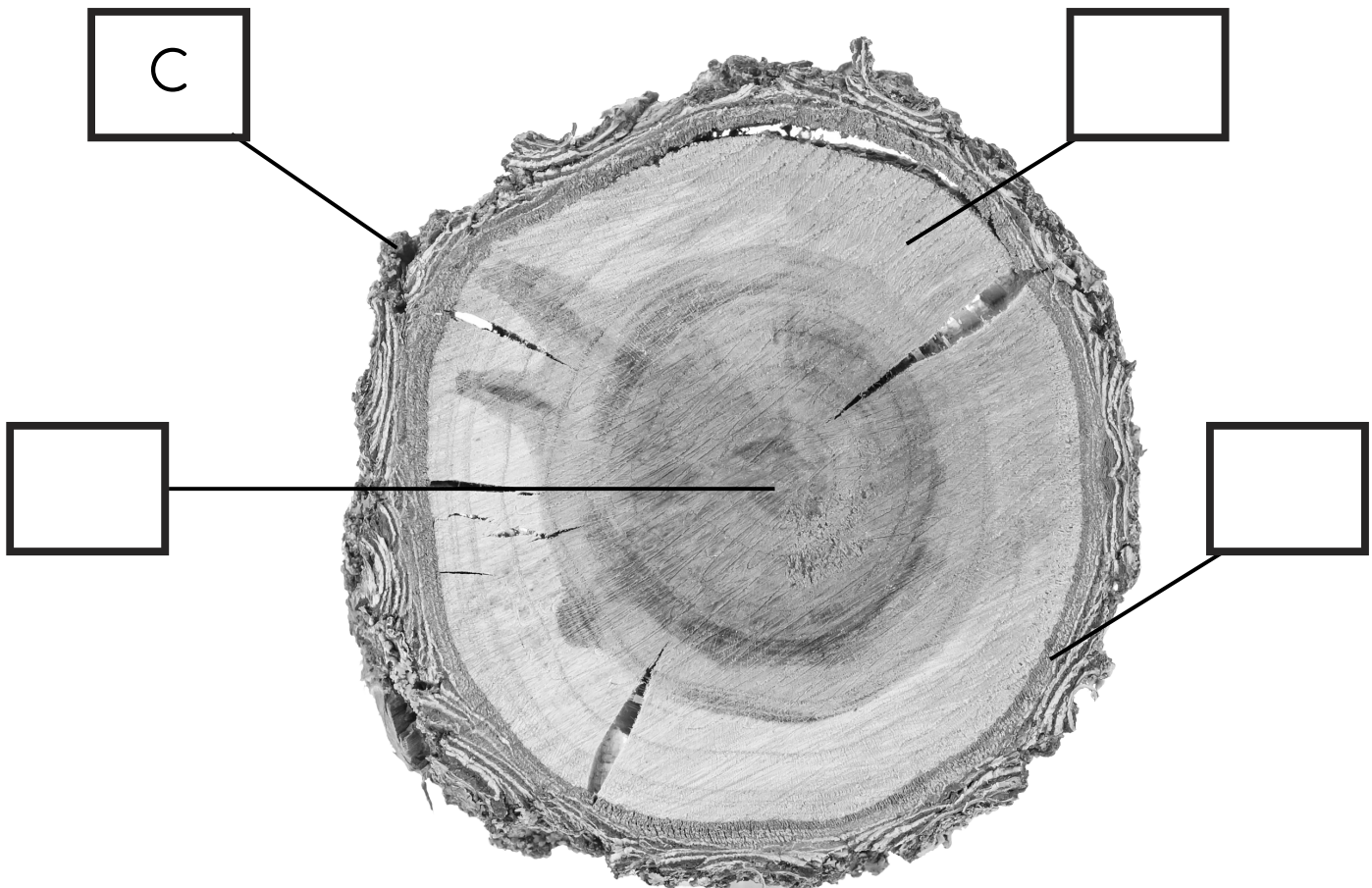
Learn more about your tree at
www.redlands.edu/trees

Vocabulary time!

Match the word to its definition and then label it on the diagram.

- A. Cambium layer
- B. Heartwood
- C. Bark
- D. Sapwood

- _____ The outer layer of woody plants
- _____ A thin cellular plant layer of tissue lying between the bark and the wood. Responsible for the second layer of growth of stem or bark. Increases the thickness of the tree.
- _____ The soft outer layers of recently formed wood between the heartwood and the bark, containing the functioning vascular tissue. Carries water and nutrients through the tree.
- _____ The dense inner part of a tree trunk, yielding the hardest timber it no longer conducts water, and its main function is the support of the tree



Wordsearch

A E C J L P H O T O D E G R A D A B L E X P
D H A N G M E F W S Y D R F C S B V T C H F
A P R Q E S T U X P A Z J Y H E A M K O L N
P I B T R V B L R Q T P Y U G F H Z T P I R
T S O P M O C R K H D Y W D S K V F A H O S
A K N Y I R L H B E J E E O L U A M E L Y X
T W D S N M I N C E A L I S O Y R T C O S L
I C I N A D Q O I W L B E V N D I O X E U R
O R O E T A M I S N N A Z T E U P L Y M A K
N S X C I P R Y E N V D I M R A O H B R W S
A E I E O Y X B M K L A O E W B L C D H N E
Y C D S N K D U P G V R S P R X Z O R S P V
S F E U Q E J L S Q E G D I J C Q N X T Q I
Z C A M B I U M L A Y E R W V A D S P R L T
T P F H E A R T W O O D T R M E B E H E R A
R L B V T X Z E C O U O S E R L A R U T A N
V J M I W D U Y D R L I R G N W I V N Y D W
Q S P E C I E S H W P B D W Z U H E I M U V
G D R O U G H T T O L E R A N T J S G C M A
P H O T O S Y N T H E S I S A Q N X T Y U S

ADAPTATION

BIODEGRADABLE

CAMBIIUM LAYER

CARBON DIOXIDE

COMPOST

CONSERVE

DECOMPOSE

DROUGHT TOLERANT

GERMINATION

HEARTWOOD

INVASIVE

NATIVE

NATURAL RESOURCE

PHLOEM

PHOTODEGRADABLE

PHOTOSYNTHESIS

SAPWOOD

SPECIES

XYLEM