

# The Criticality of GIS

## Basemaps: *Quality as the Key to Success*

here

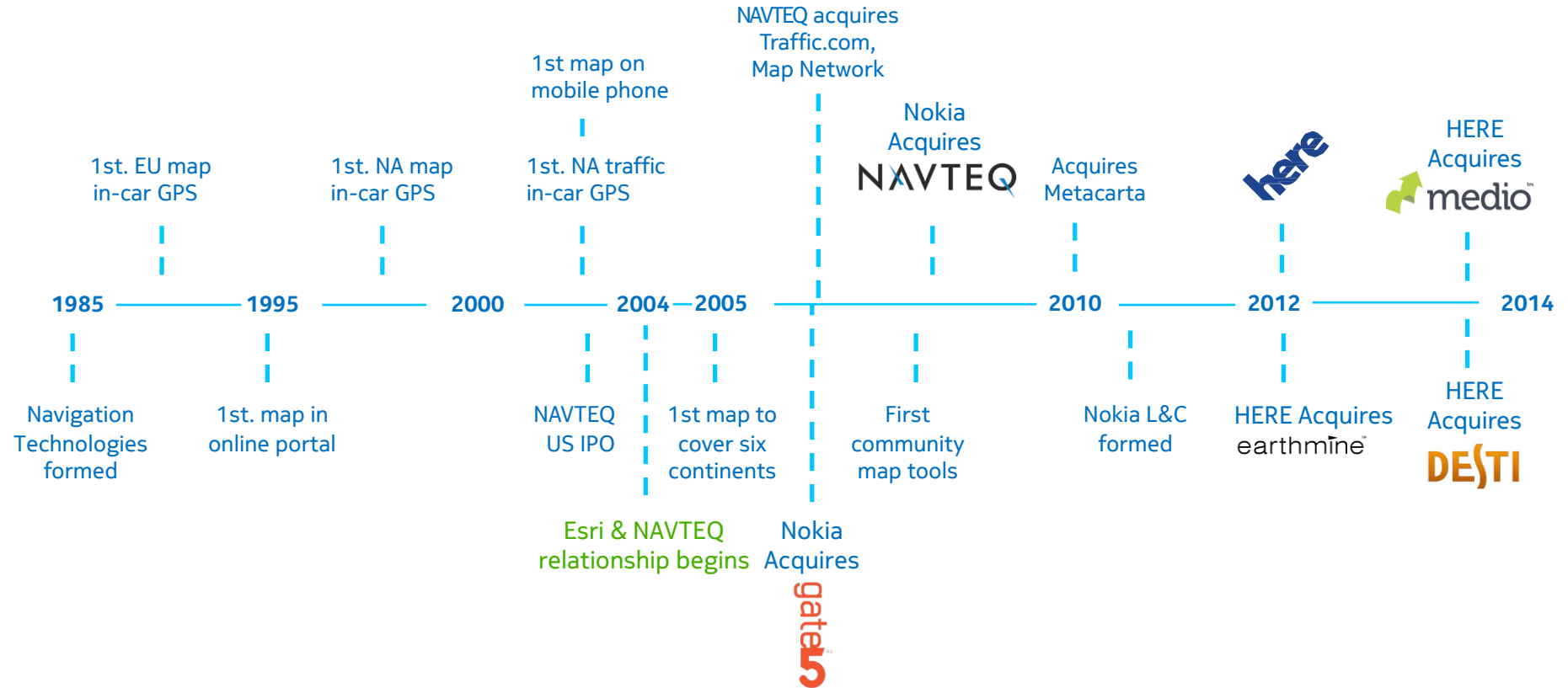
Prepared by Milton Ospina, HERE Global Business Development Manager

March 11, 2015

Company confidential



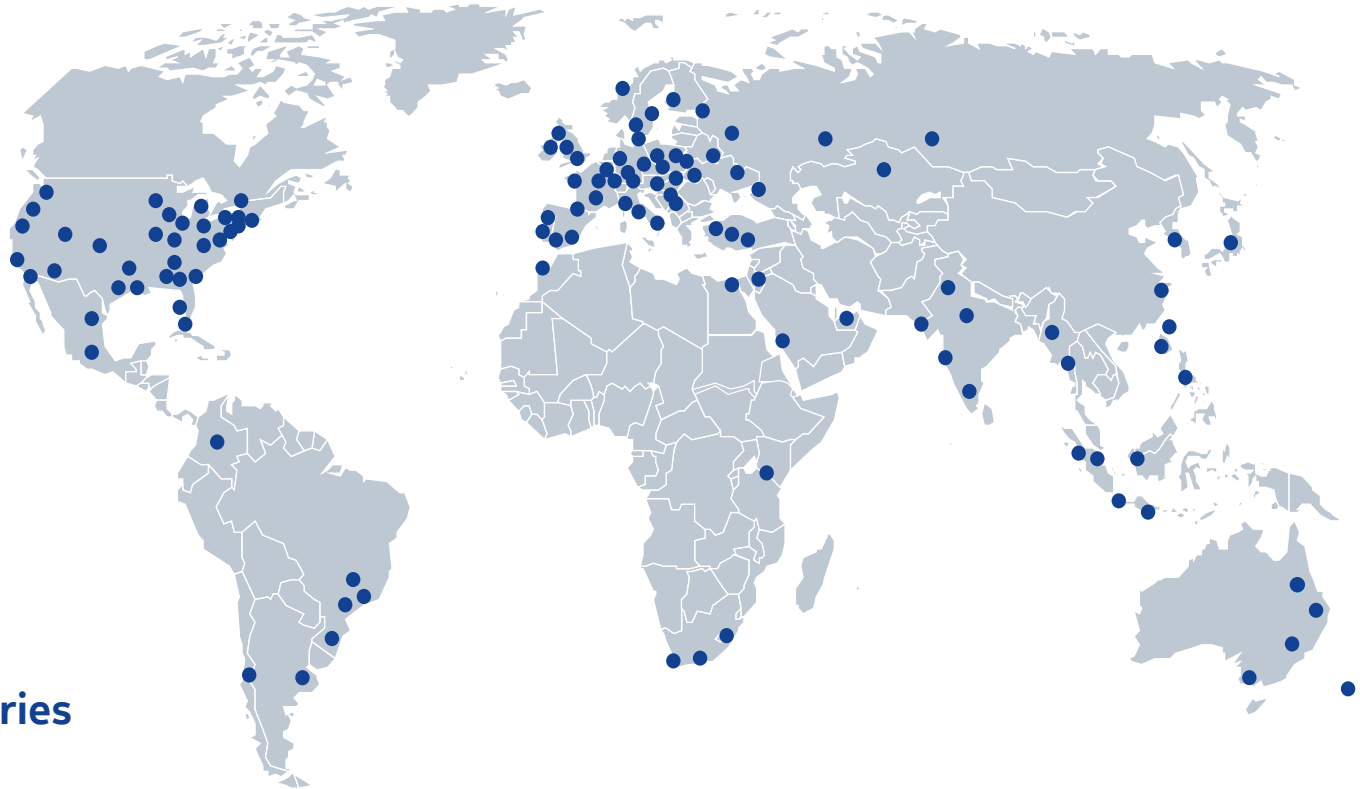
# HERE has a map heritage that spans three decades



Formerly NAVTEQ



# Dedicated location-based company with **global reach**



Employs **6,000 +** in  
**people** in 55 countries

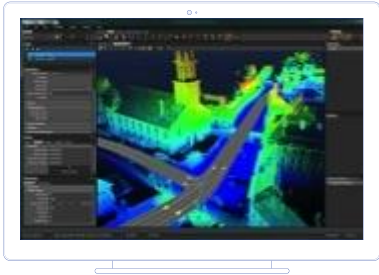
**We are passionate about making maps  
& we have a unique vision for what a  
map can be and do**

# Unmatched capabilities and global scale enable automotive grade quality maps

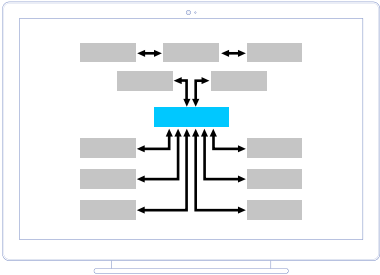
Technology Leadership



Best-of-breed automation



Consistent Specification



Field Operations with local insight



# The broadest global coverage enables more consistent experiences wherever your customers are



Maps for every country on the planet



Auto grade quality navigation



113 x the distance between earth and moon

# The most extensive content enables flexibility to differentiate across multiple use cases



**42**

countries  
real time  
traffic



**800**

cities public  
transit



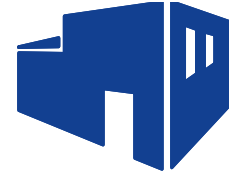
**430**

cities natural  
guidance



**50k**

buildings with  
venue maps



**153**

cities with  
street level imagery

*... and many more ...*

# HERE Map Index

HERE enables a staggering array of use cases, including navigation in the car, on public transit and on foot.

We provide the freshest, most accurate and reliable map in the world. We capture the richest and most precise models of the real world and 2.7 million changes to them each day.





# Advanced technology for the most accurate and detailed maps: Reality Lens



Mobile LIDAR capture  
for 3-D rendering

10-20 cm accuracy for  
attributes including lane  
width and height of assets  
+  
Street-Level Imagery

**We are passionate about our customers  
and the value of true partnership**



# Strong Leadership in Fleet Management and Logistics

## Navigation



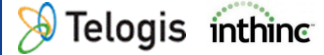
## Fleet Tracking



## Optimization



## Driver Safety/ADAS



## Parcel Delivery



here

# Federal Government Clients



here

# Success Stories: US State Departments of Transportation (DOTs)

## Recent Wins

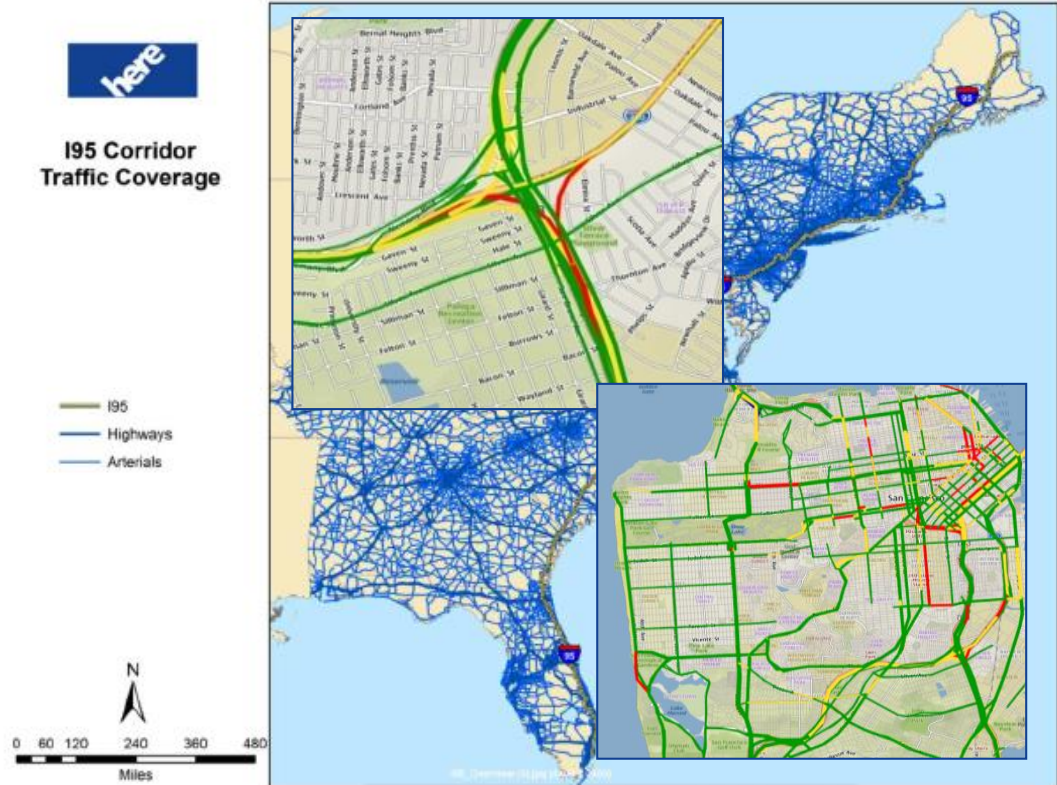
- I-95 Corridor Coalition
- Missouri DOT
- Michigan DOT
- Florida DOT
- TRANSCOM (NY, NJ, CT)
- Penn Turnpike

## HERE Products

- HERE Map Data
- HERE Real-Time Traffic
- HERE Traffic Patterns

## HERE Products Use Cases

- 511 Info distribution
- Agency planning
- Traffic monitoring and operations



# Helping Increase Efficiency and Productivity

Utility  
Management

Public  
Transport  
Management

Traffic  
Management

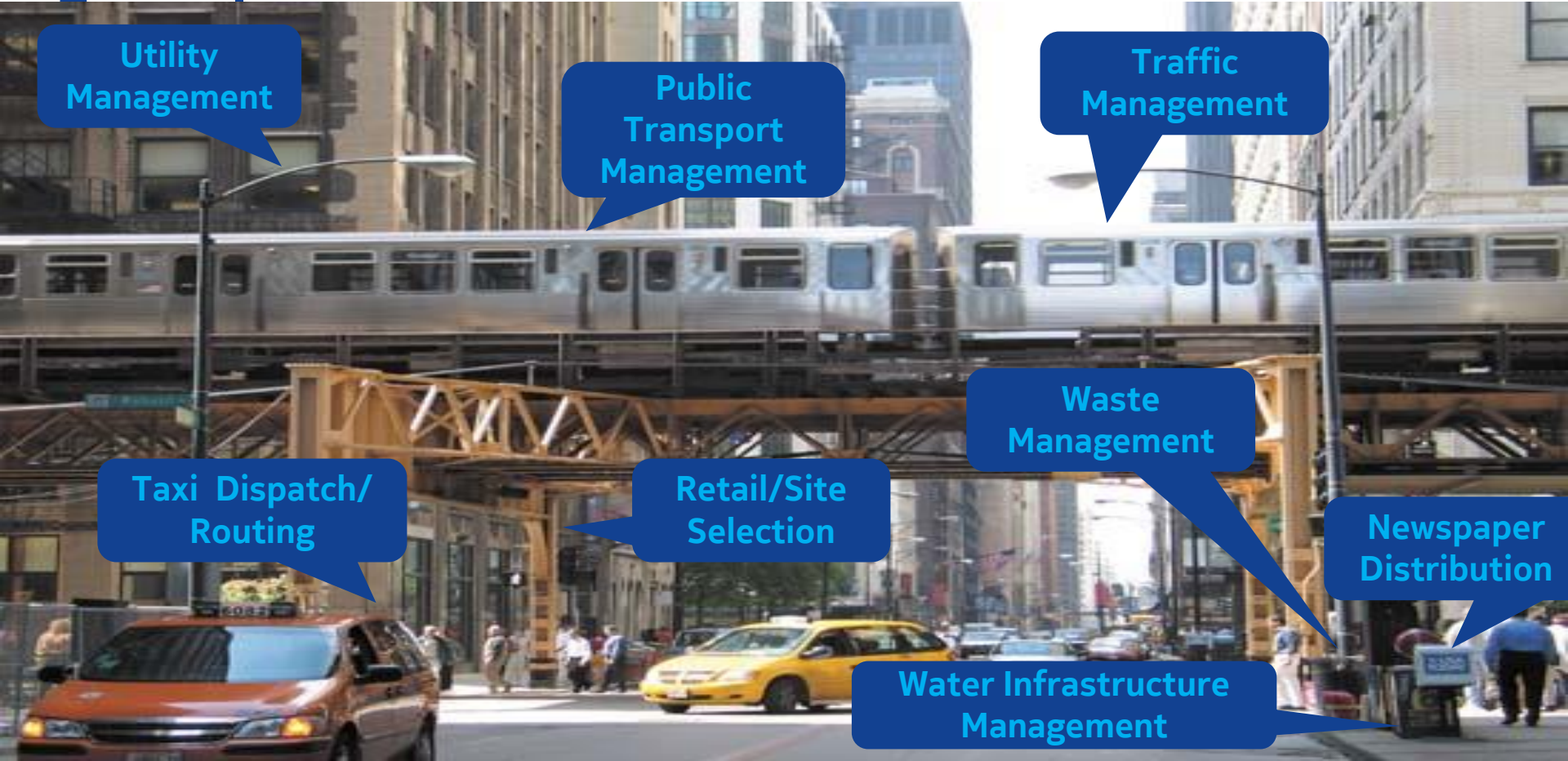
Taxi Dispatch/  
Routing

Retail/Site  
Selection

Waste  
Management

Newspaper  
Distribution

Water Infrastructure  
Management



# Serving a Variety of Vertical's GIS Needs

## Utilities



Management of fixed and mobile assets (power lines, gas mains, poles and towers) including outage management

## Telecom



Economic development analysis, Call-Before-You-Dig, Network Management and CRM

## Retail



Business process improvement including market analysis, site selection and logistics management

## Insurance



Risk analysis and mitigation, portfolio assessment, claims management, Pay-as-you-Drive

## State & Local Govt



Agency-wide data sharing, which enhances workflow, decision making, and coordination

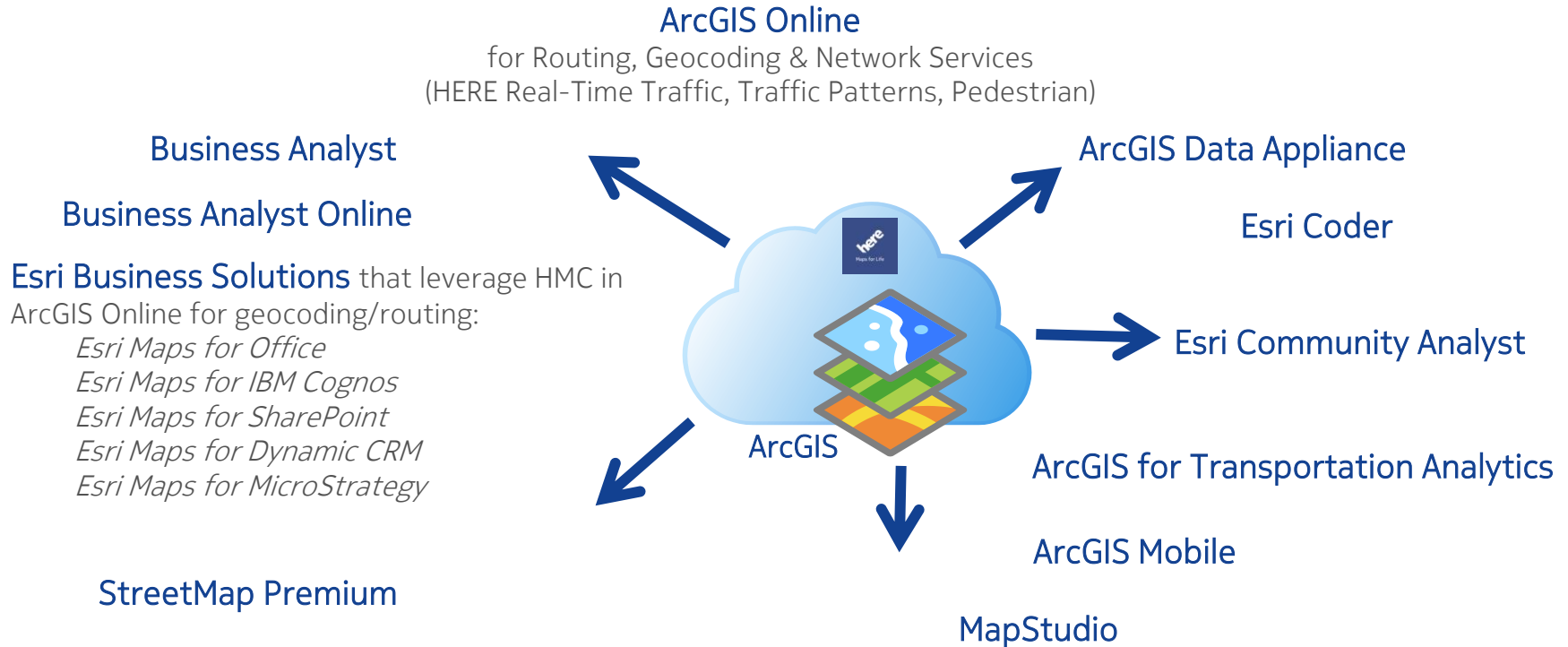


# HERE & Esri: Strategic Data Provider



**esri**

Partner Network  
Platinum



**Building the world's best map**  
The building blocks of a premier solution

# Data Quality is a Major Problem

Poor data quality costs U.S. businesses more than **\$600 billion** each year

The cost of bad data for an individual business can be put at **15% to 20% of revenues.**

Individual address data has an information quality decay rate of **17% per year** in the U.S.

**10-25%** of data records contain inaccuracies

Actual data errors in a typical customer base may range from **25% to 30%**

Poor data quality is the most common reason why organizations do not realize the benefits of their data platform investments including: CRM, BI and Data Warehousing.

here

# Some Facts About Data Quality



91% of businesses suffer from **common data errors**.



On average, U.S. organizations believe **25%** of their data is **inaccurate**.



**Human error** is the most common cause of **inaccurate data**.



77% believe their bottom line is affected by **inaccurate and incomplete contact data**.



81% encounter **problems** when trying to generate **meaningful business intelligence**.



66% lack a **coherent, centralized data quality strategy**.



31% state a **lack of internal communications** between departments causes **inaccurate data**.



30% feel **duplicates** are within their top 3 **data quality problems**.

# Delivering the freshest maps ensures the best possible experience



80K

LOCAL  
SOURCES



22B

PROBES  
PER MONTH



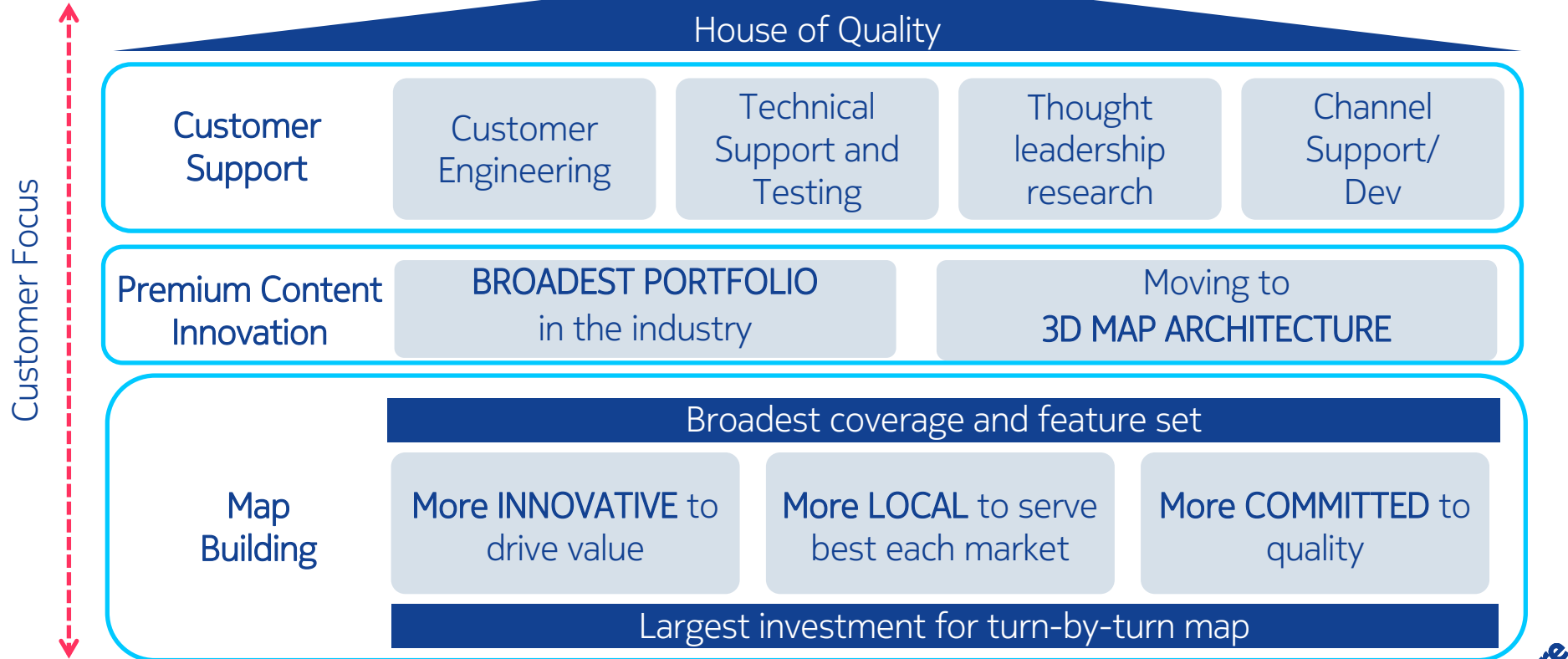
2.7M

MAP UPDATES  
PER DAY

**HERE provides real-time big data processing scale and flexibility needed for connected solutions**

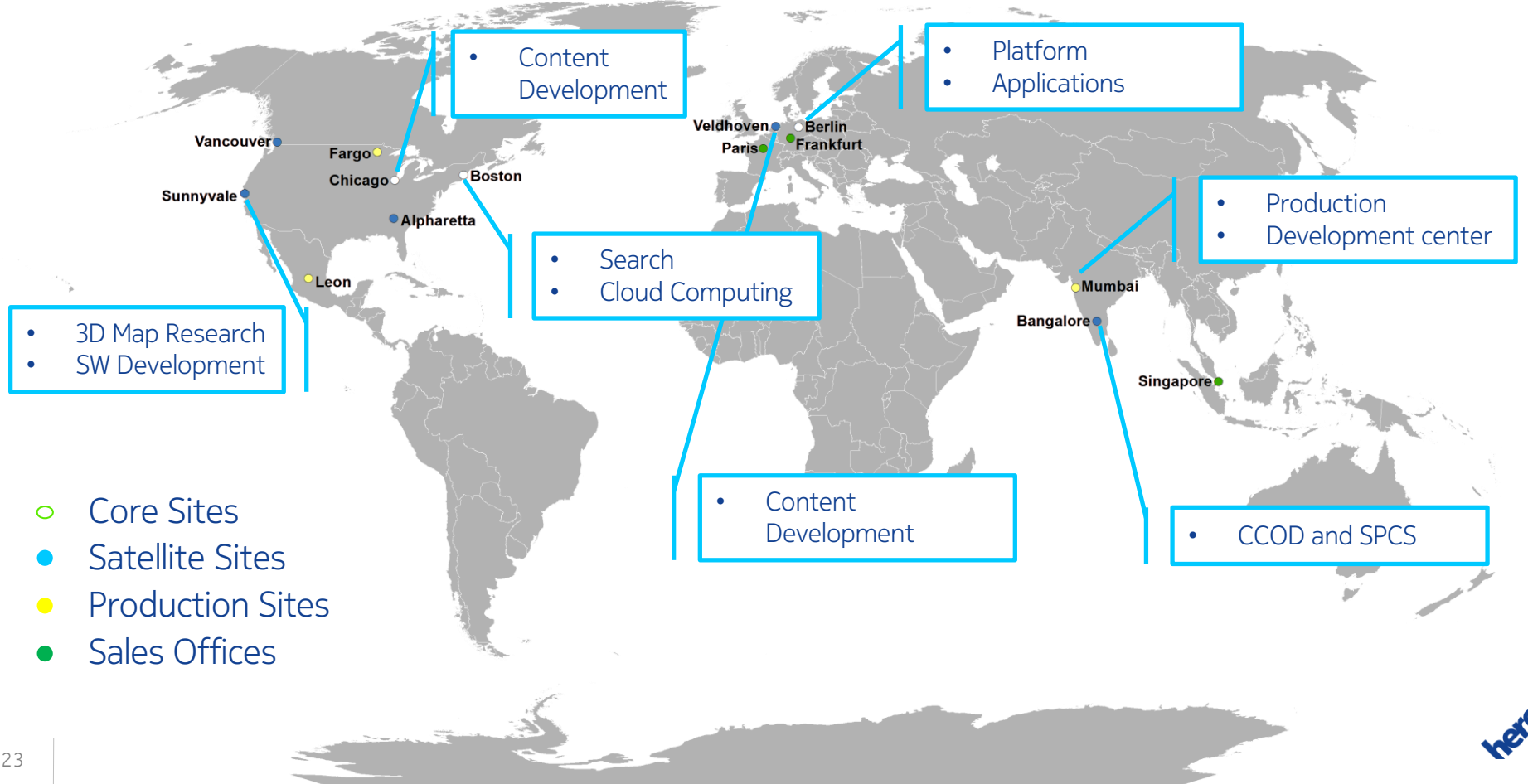
# The building blocks of a premier solution

Best map building and maintenance capabilities, best customer experience



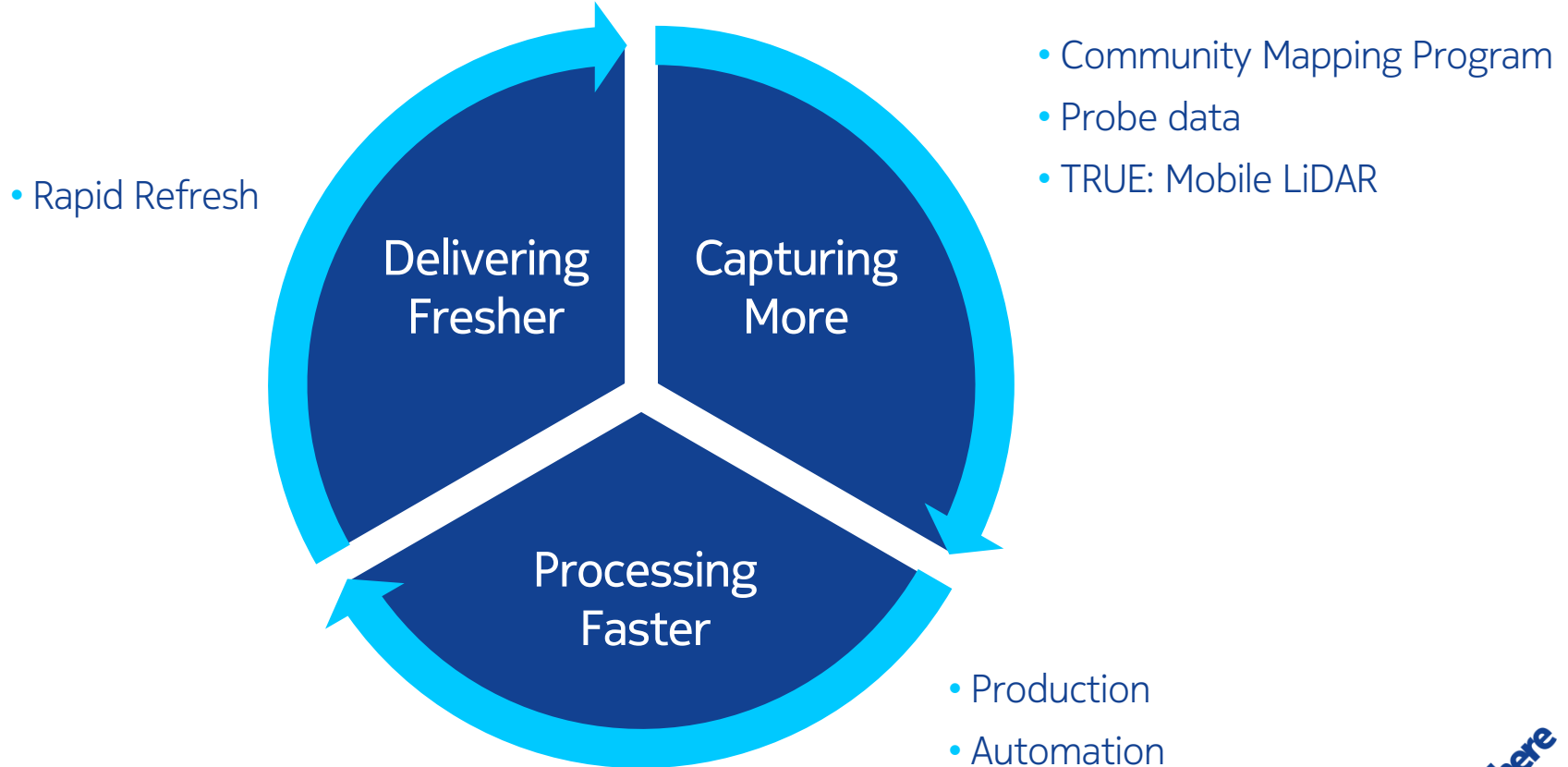
here

# Extensive and global R&D presence



# New innovative tool deployment

Hundreds of millions of dollars are invested every year





# Introducing next generation TRUE

## 2012

- Added 100 Multi Camera Vehicles
- 930,000 KM of TRUE data collected



## 2013-2014

- Joining forces with earthmine
  - More modular and portable
  - Enhanced reliability and uptime
  - Enhanced quality of footage
  - Enhanced LiDAR



**+ 200**  
Vehicles

**~30%**  
In Emerging  
Markets

here

# Benefits from advanced collection

**Navigation:** High-quality footage from TRUE is used to improve maintenance of key attributes like speed limits, warning signs, traffic signals and lane markings

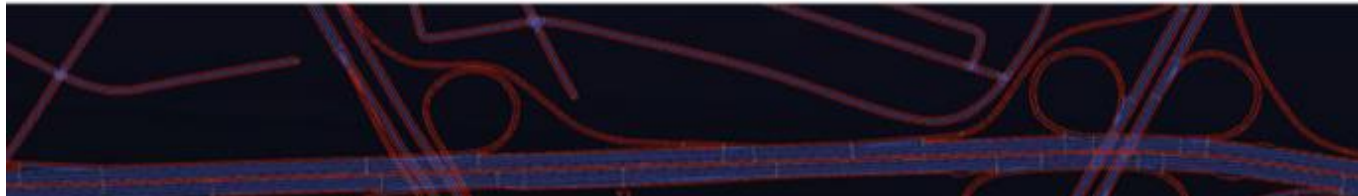
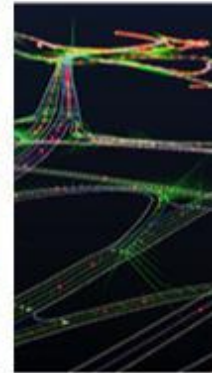
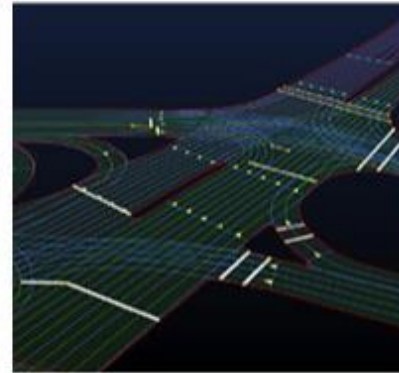
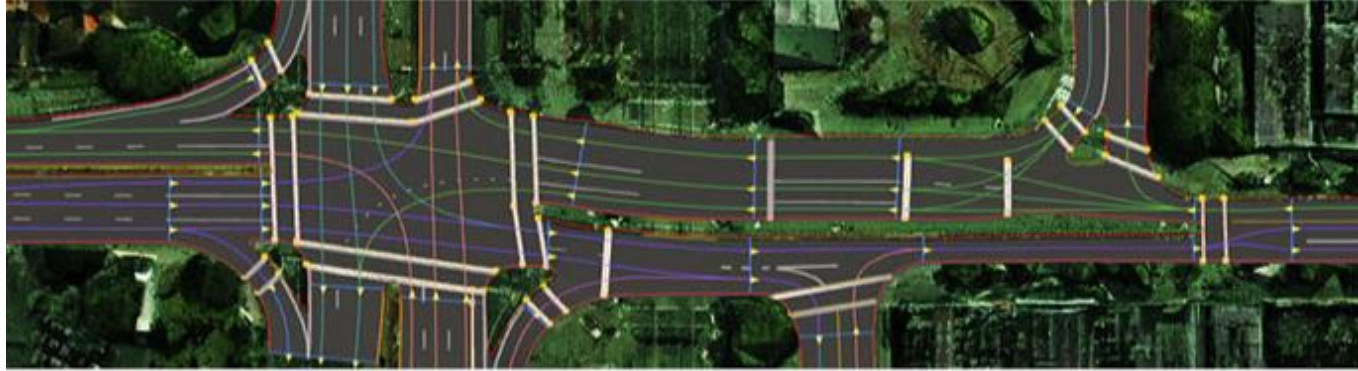
**ADAS:** Data captured for height, slope and curvature enable Advanced Driver Assistance Systems that are much more accurate — and advanced

**3D:** Accurate 3D view of the world is revolutionizing map imagery and fueling Augmented Reality products that, much more than visually appealing, are genuinely useful.

**Utilities/Urban Planning/Asset Management:** An ocean of LIDAR data captured by TRUE will allow us in the future to explore the use of raw LIDAR data to support a variety of use cases based on accurate infrastructure mapping.

# HERE is reinventing the map for simpler and safer modern urban living

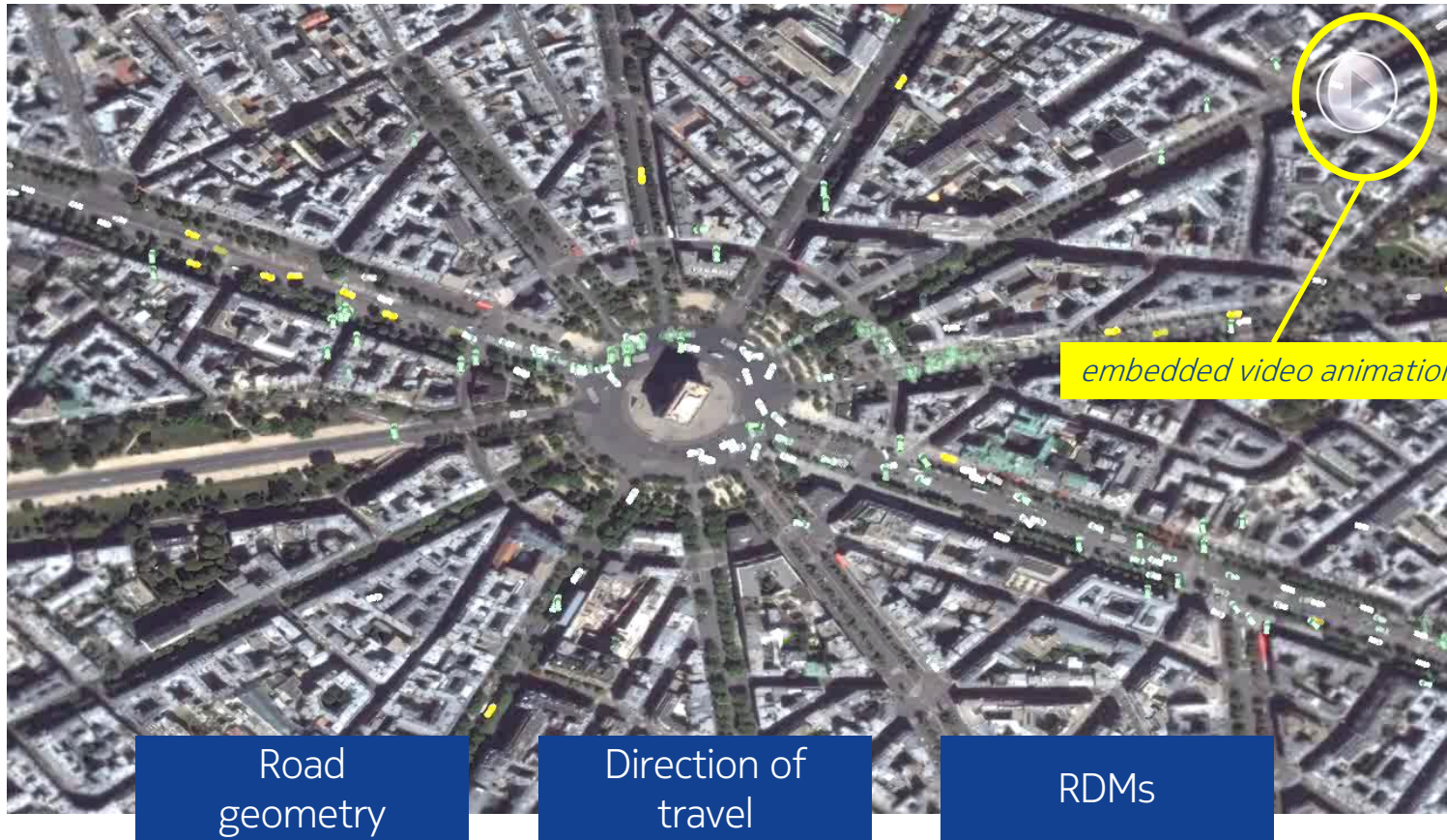
We help people navigate their lives with ease and confidence by providing the worlds best maps and location experiences across multiple screens and operating systems.



<http://money.cnn.com/2015/02/17/technology/maps-driverless-cars/index.html>

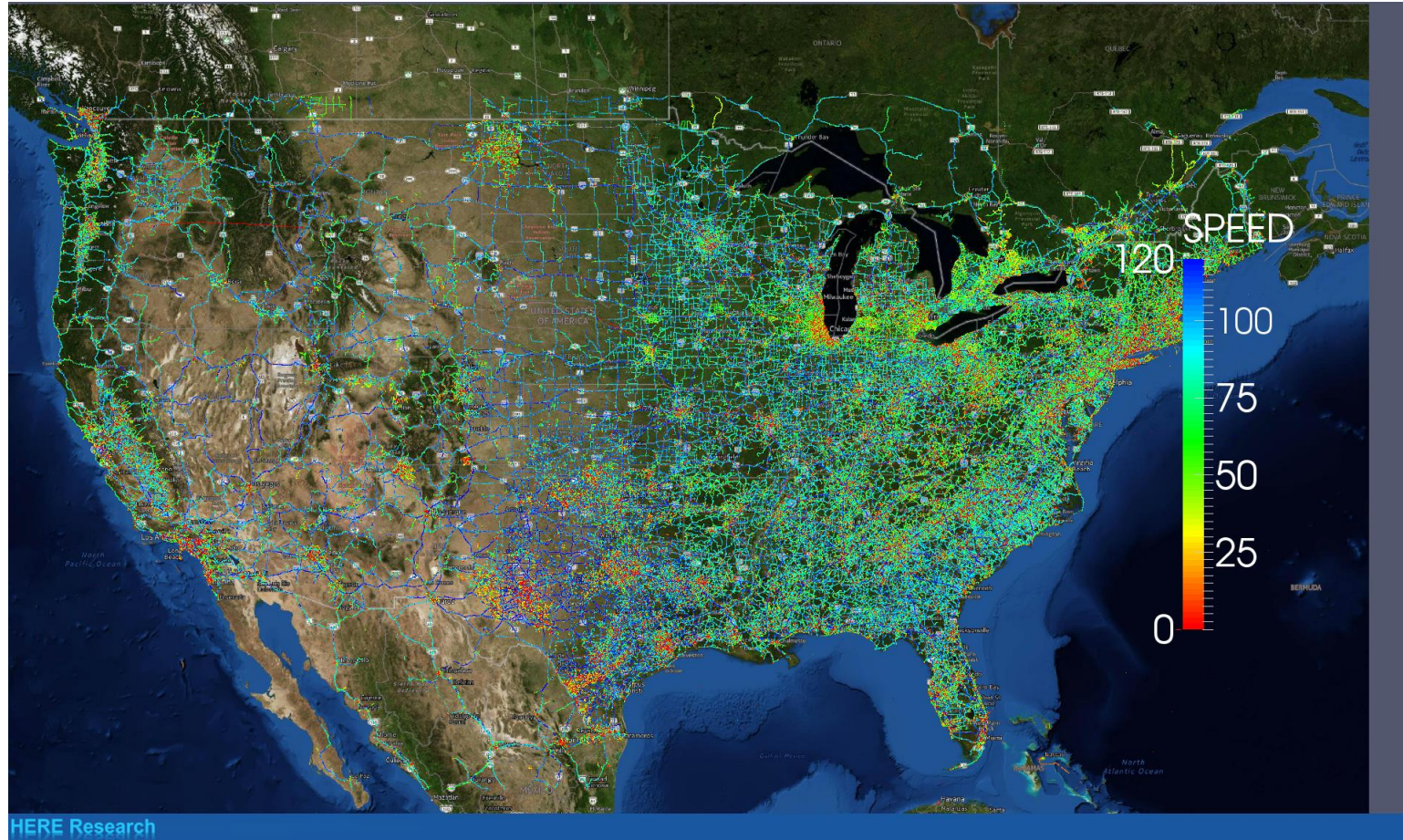
here

# Harnessing the power of 22B probe points



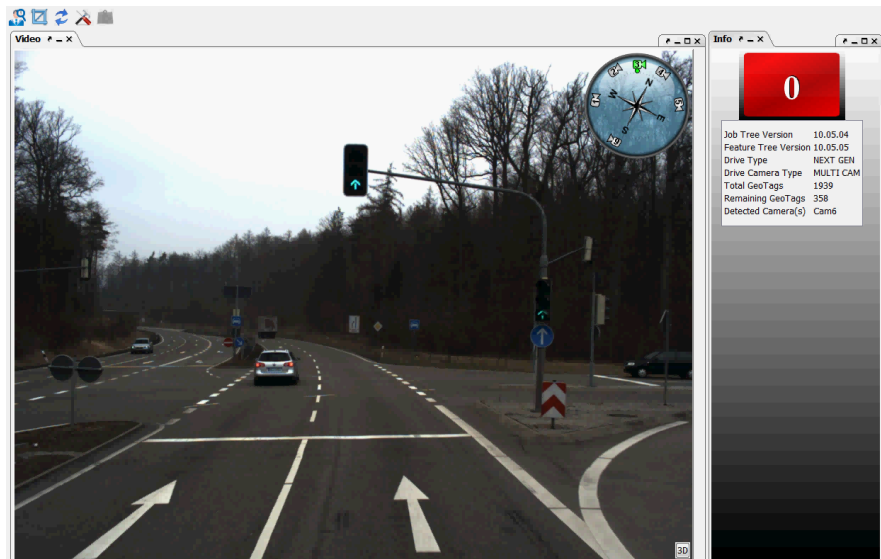
here

# Harnessing the power of probe data



# Getting scale faster through feature recognition

- Automatically detect and extract signs
- Low confidence items are validated by an analyst to ensure quality



Not switching to cam 3, already switched

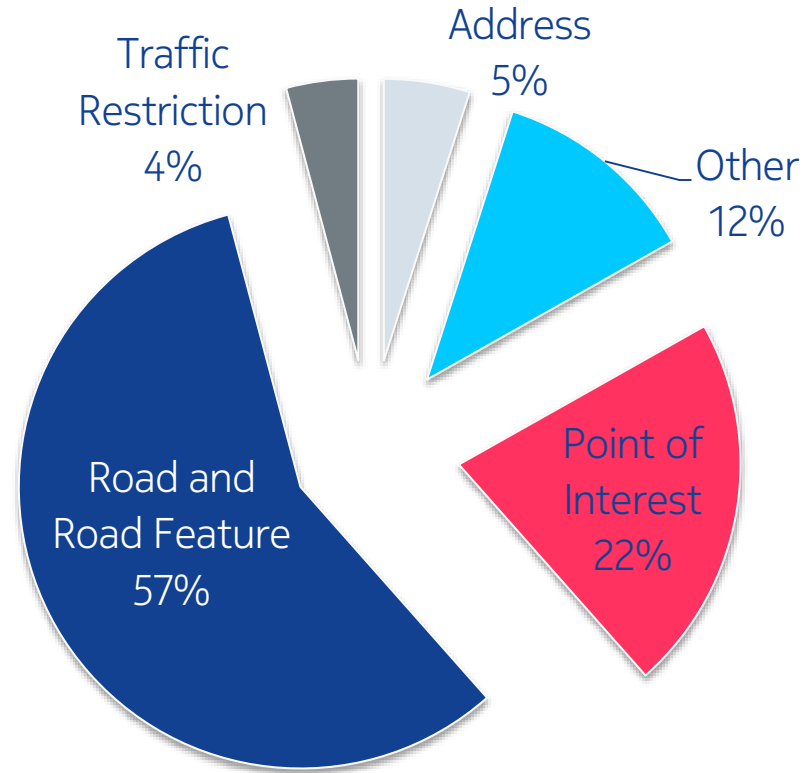


← embedded video animation

here

# We are resolving Map Reports faster than ever

- Most important categories:
  - Road features
  - POI
- Average resolution time decreased by half between 2012 and 2013 (YTD)
- More than 30% of all MRs are already reflected in the database or not a change we can make
- Number of MRs declining due to improved database freshness



Total Map Reports by category

# HERE Community Mapping Program



COMMUNITY MAPPING

## THE LOOP



### COLLECTION

With 6000 mapping experts in over 56 countries today, and the potential of millions of end users of HERE powered properties in future, together we can build the freshest and richest maps.



### MODERATION

Community self-moderation, voting, and automated validation processes ensure the highest quality community data before ingestion into the map



### INTEGRATION

HERE imposes strict practices on how community data is collected and processed to ensure the resulting quality meets and exceeds the needs of our consumers and customers, from outdoor to automotive, and everything in-between.



### DELIVERY

Our intent is to deliver community changes back to consumers and customers timely, aiming at below 24 hours lead time for high priority changes and even enabling 'live maps' where professional validation is not needed





# Quality is in our DNA

## We have an unmatched Quality Management System (QMS)



### Management System

ISO 9001:2008 Quality	ISO/TS16949:2009 Quality (automotive)	ISO/TS16949:2009 Quality (automotive)	ISO 14001:2004 Environmental	OHSAS 18001:2007 Occupational, Health & Safety
--------------------------	--	--	---------------------------------	---

### Scope

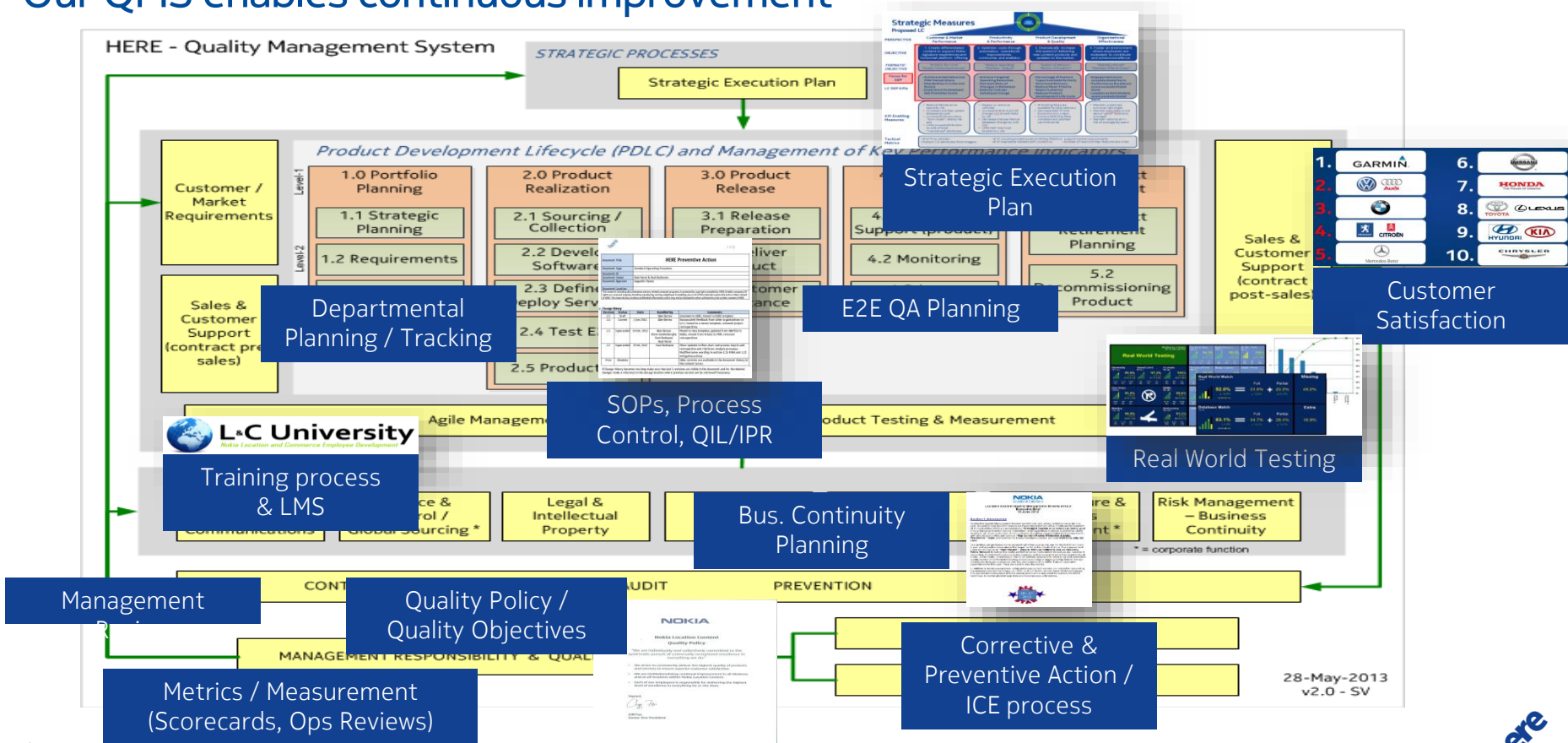
Design, create, manage, distribute and maintain enhanced digital map products, related software and services used for automotive, consumer, enterprise and governmental applications.	Manufacture (create) enhanced digital map products and services used for vehicle applications.	Manufacture (create) enhanced digital map products and services used for vehicle applications.	Create, manage, distribute and maintain enhanced digital map products and services used for automotive, consumer, enterprise and governmental applications.	Create, manage, distribute and maintain enhanced digital map products and services used for automotive, consumer, enterprise and governmental applications.
---	--	--	---	---

### Applicable location

Worldwide	Chicago (USA)	Veldhoven (NLD)	Veldhoven (NLD)	Veldhoven (NLD)
-----------	---------------	-----------------	-----------------	-----------------

# The HERE Quality Management System

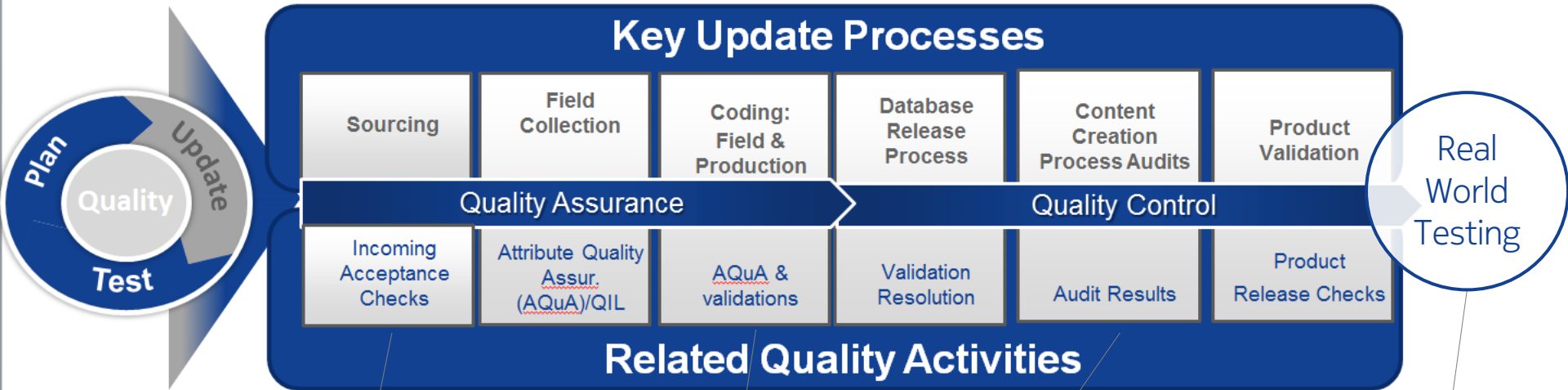
## Our QMS enables continuous improvement



here

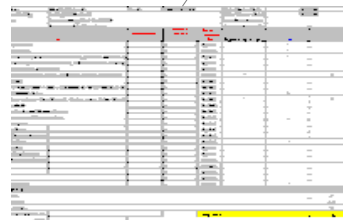
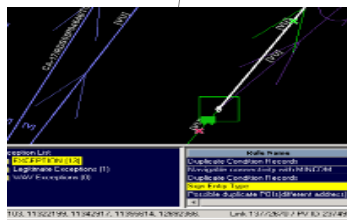
# Map building – test at every step of the way

## Key activities and quality processes



### Related Quality Activities

National	
State	
County	
City	



Real World Testing

here

# Map content validation & audits

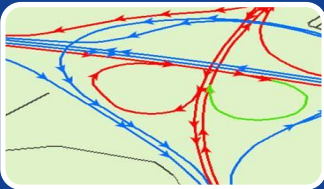


**Map Content Validations** - comprehensive validation processes ensure consistency, quality and accuracy during the build process.

1,900+  
validations

Address (s)	Sander Sriniva
Audit Location(s)¹	Desktop - Phone Interview
Audit Type	Process Audit
Audit ID(s)	L141, 141, 141, 141
Responsible Party	Sander Sriniva, Jander Kumar, Laura Henderson, Heather Jerald, Denise Lister
<small>1. Location being audited against requirement. See Analysis, Customer Internal Requirements, Specifications, Policy Docs. ². Reference to the applicable ISO, IEC, or FDA regulation, legal requirements. ³. Name of the internal audit finding.</small>	
Audit Score	
Scope	Not audited although in audit scope
Sub-Process	Strategic Planning
Audit Objective and Agenda	Strategic Planning
Objective	Ensure compliance of planning & management according to requirements and improve the audit process.
Start Date	March 2 <sup>nd</sup> , 2013
End Date	Closing Meetings (April 8 <sup>th</sup> & 9 <sup>th</sup> , 2013)

**Content Creation Process Audits** - check process compliance and effectiveness of corrective actions, to proper process improvement. It helps identify the issues prior to customers.

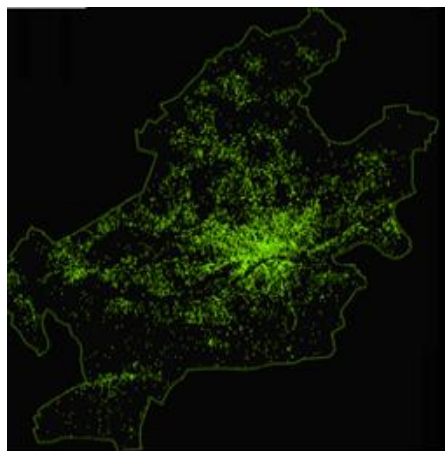


**Map Content Containment Checks** - focused on addressing the risks (new features/inclusions, missing validations) and mitigation implementation for each database release or extract shipment to a customer.

# Unique testing capabilities that set an industry quality standard for map making

Real World Testing Data

Activity Data



**= 97.3%**

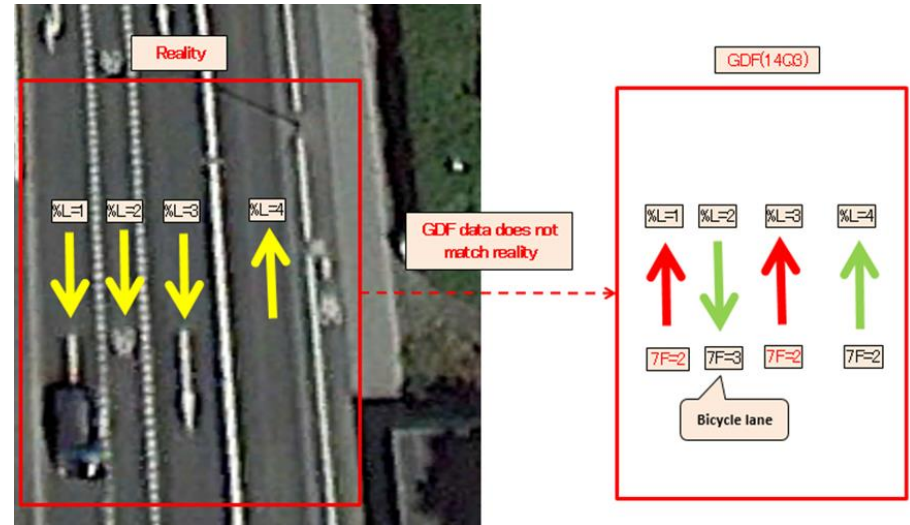
Total Route Score

# So... Do we ever make mistakes?

Elektrobit Compilation Q4-2011 (missing ocean in red circle)



EDGE ID 832630717 in Germany: The 2 drivable southbound lanes were erroneously published as northbound lanes in Q3-2014 GDF



here

# In summary

## Best Content

Largest portfolio & coverage  
Innovative use cases  
Services opportunity

## Best Map

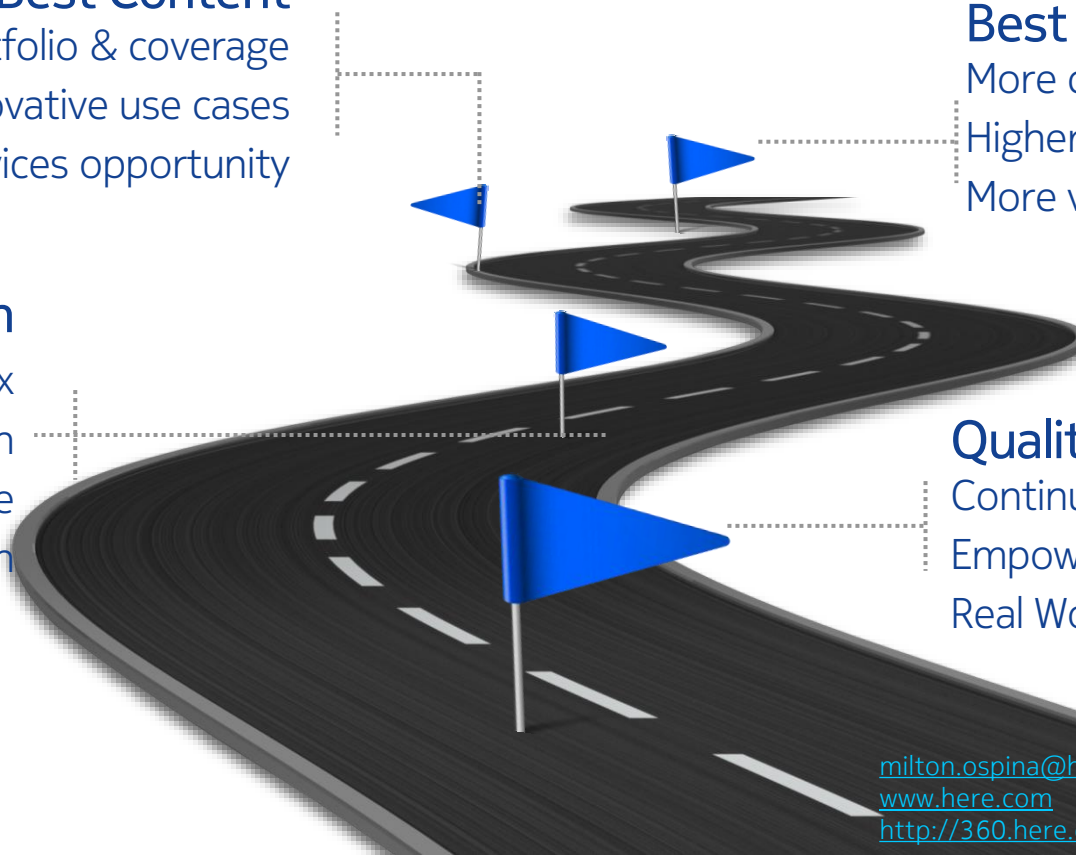
More change than ever before  
Higher accuracy  
More value

## Innovation

Deepest toolbox  
“Right fit” approach  
3D Layered database  
Rapid Refresh

## Quality

Continued investment  
Empowered local presence  
Real World Testing



[milton.ospina@here.com](mailto:milton.ospina@here.com)  
[www.here.com](http://www.here.com)  
<http://360.here.com/>

here

# Thank you

[Milton.Ospina@here.com](mailto:Milton.Ospina@here.com)