

Location Intelligence & Social Justice in the Chi: GIS and its Role in Equity in the Second City

Yolanda Richards
ESRI, Local Government
City of Chicago
(she, her, hers)



Overview of Topics to Address

- **Who I Am**
- **Who is ESRI**
- **ESRI Resources: Racial Equity**
- **Racial Equity, COVID19, Civil Unrest, & George Floyd**
- **City of Neighborhoods: Racial Divide in Chicago**
- **Esri Solutions: Racial Equity & Beyond**
- **Chicago Examples Utilizing Solutions from a Racial Equity Lens**

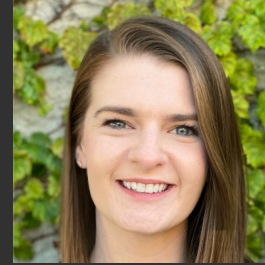
Chicago Local Government Account Team & Support



Frank Baxter
*Regional Manager,
Midwest Region*



Yolanda Richards
Account Manager



Anna Ross
Solutions Engineer



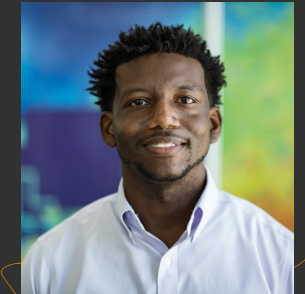
Ryan Sellman
*Solutions Engineer,
Strategy Lead*



Keith Nightlinger
Regional Services



Peter Fitts
Senior Principal Consultant



Clinton Johnson
*Solution Architect &
Racial Equity Lead*



Aisha Jenkins
Project Manager



Jacqueline Scott
Account Manager



Sheree Baugh
Marketing Program



Margot Bordne
Account Manager



Piyali Kundu
Solutions Engineer



Monika Blackmon
Training Consultant

ESRI Industries Served

Architecture, Engineering,
and Construction

Banking

Education

Government

Health and Human Services

Insurance

Manufacturing

Natural Resources

Petroleum and Pipeline

Public Safety

Real Estate

Retail

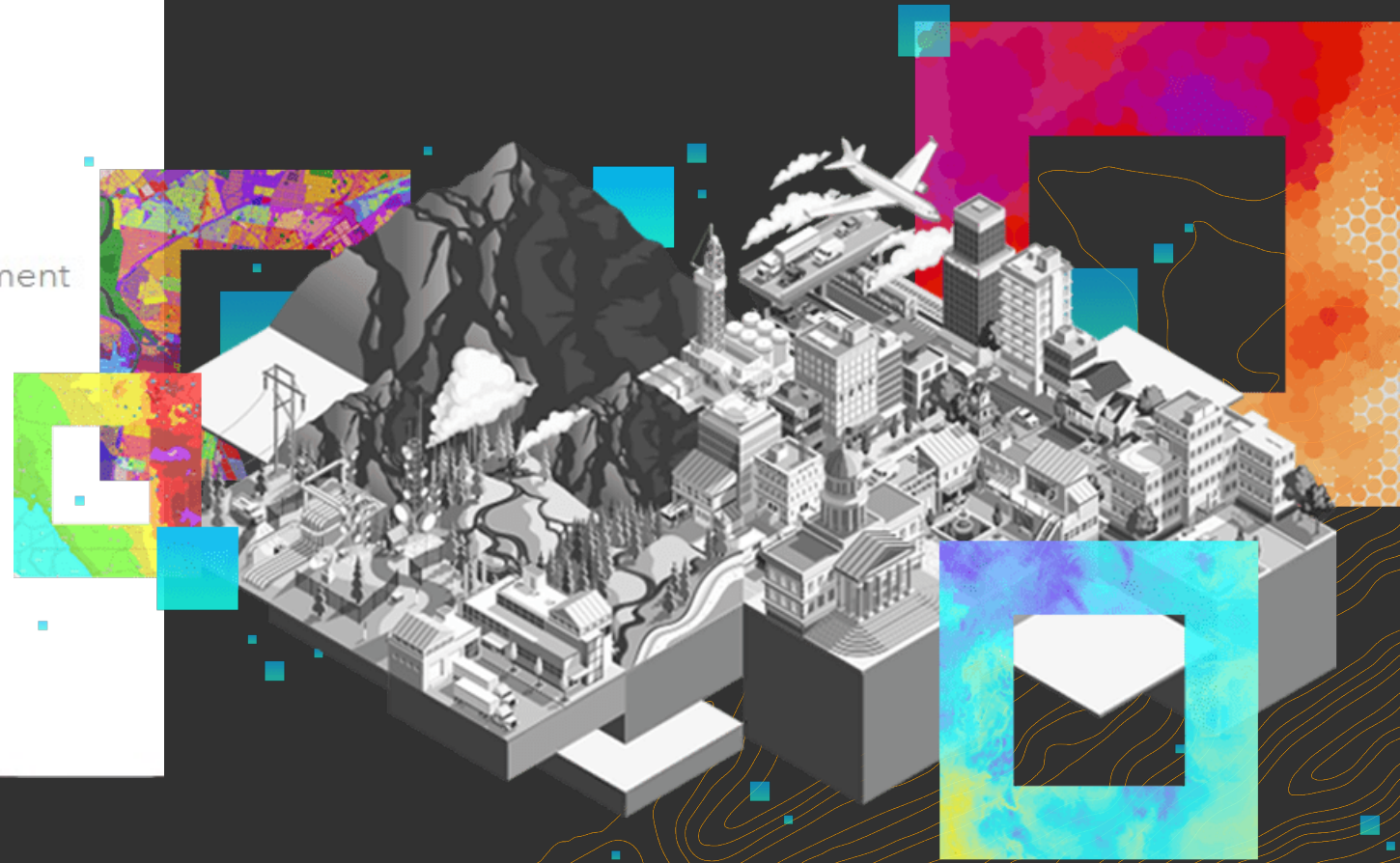
State and Local
Government

Sustainable Development

Transportation

Utilities

All industries





2,983,107
526,180
12,265,771



Geo-Enabled
Systems



OUR WORK

CREATING USEFUL TECHNOLOGY
and SUPPORTING OUR USERS

ESRI Footprint in Chicago



Mayor's Office

Park District

Current

Police

Cultural Affairs and Special Events

Chicago Metropolitan Agency for Planning

Inspector General

Mayor's Office

Public Health

Housing Authority

World Business Chicago

Chicago State University

Chicago Public Schools

Planning & Development

Chicago Transit Authority

Aviation



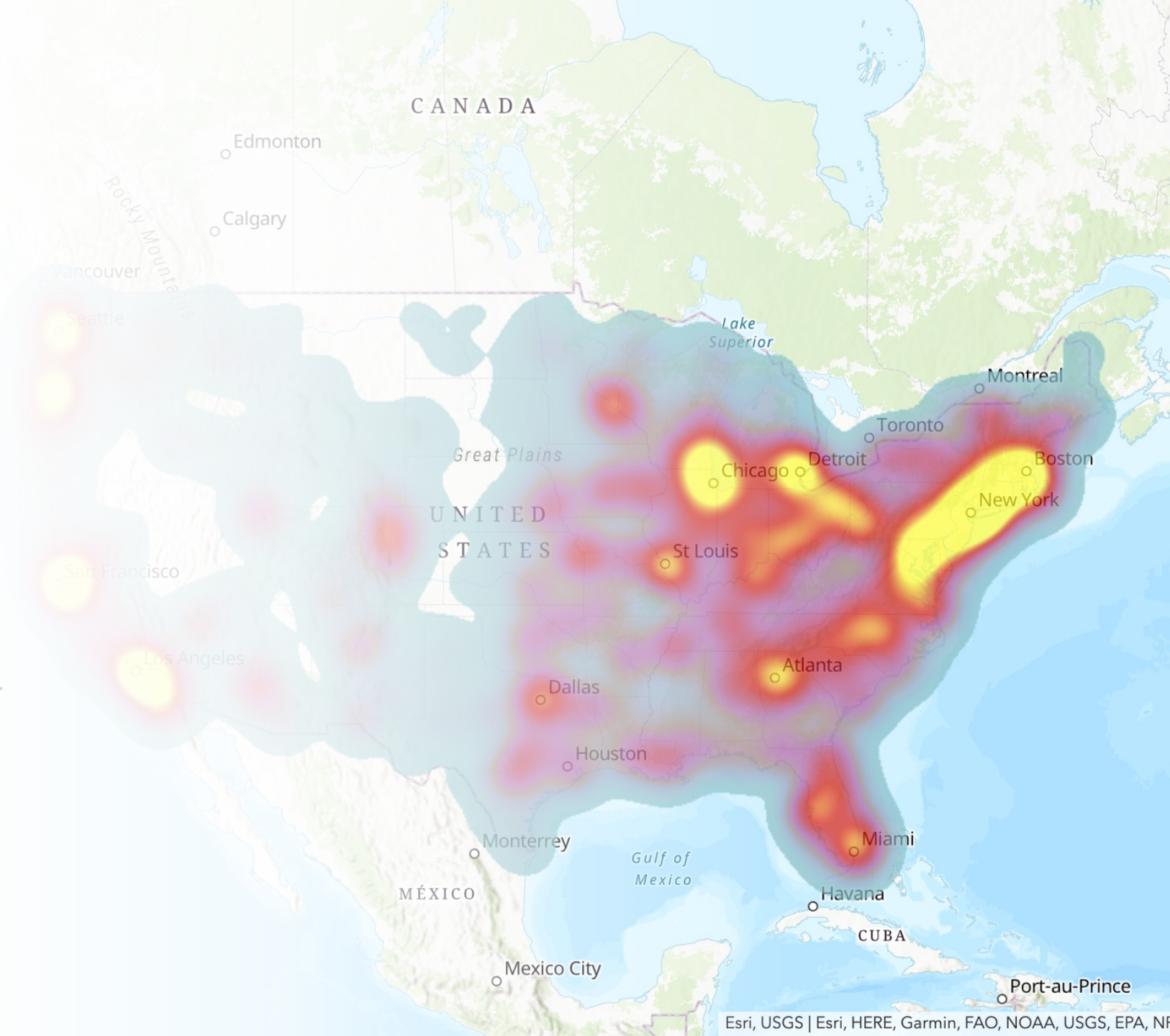
Photo by [Kelly Lacy](#) from [Pexels](#)

Racial Disparities in Covid-19



**NEARLY 3X
MORE DEADLY**
IN BLACK & LATINO COMMUNITIES

Black Lives Matter
Protests in the US
After George Floyd's Killing



Extra-judicial Killings of Black Americans





#WeAreDoneDying

Why I Do this Work....



Community Outcome Streams

Community Assets & Conditions

Direct results of upstream systems that provide advantages or create disadvantages for individuals, families, and communities



Live



Work



Play

Housing quality, quality of schools, employment rates, wages & earnings

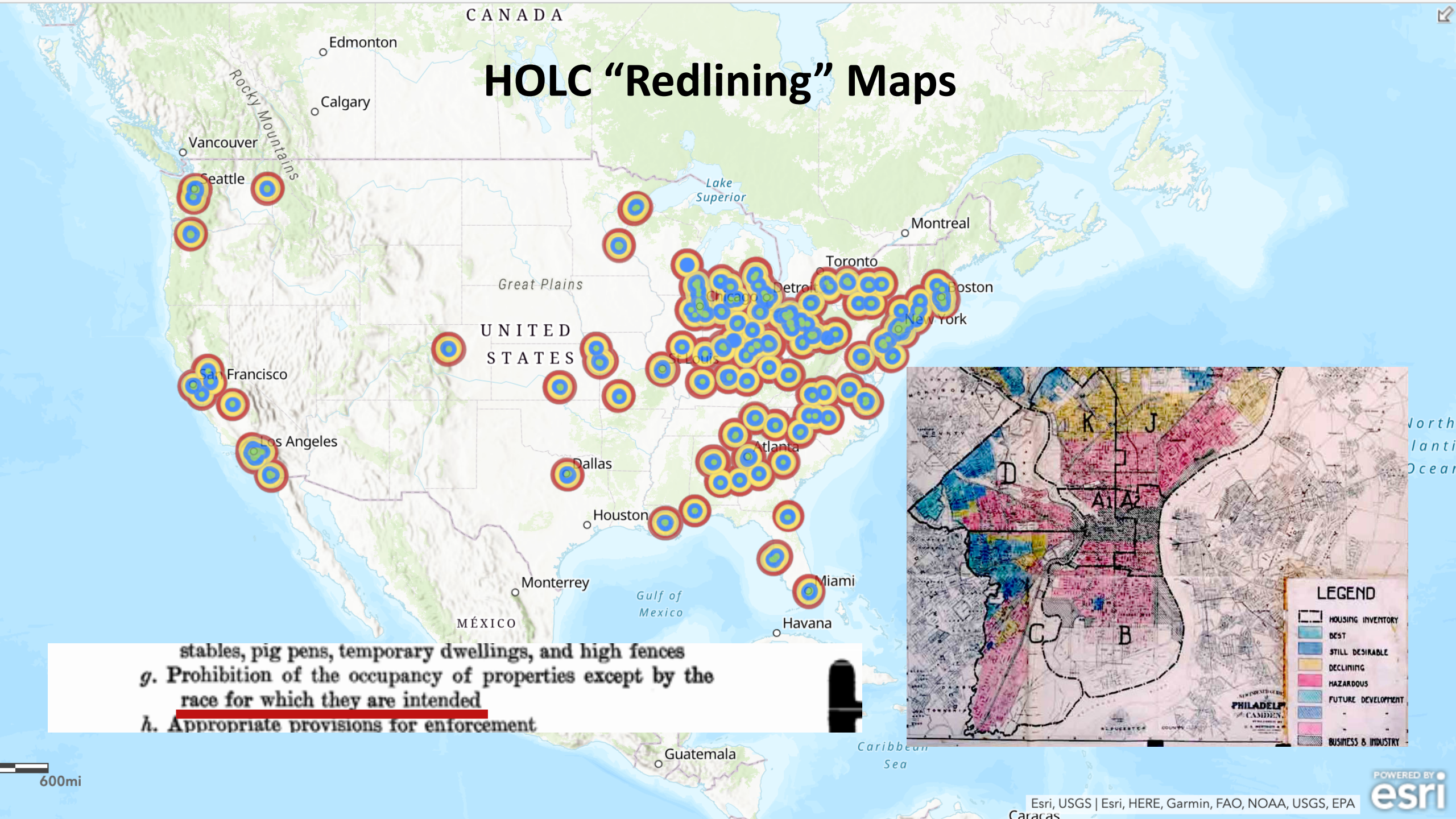
Availability of insurance, quality of healthcare, pay gaps

Food security, parks & recreation safety & access, air quality

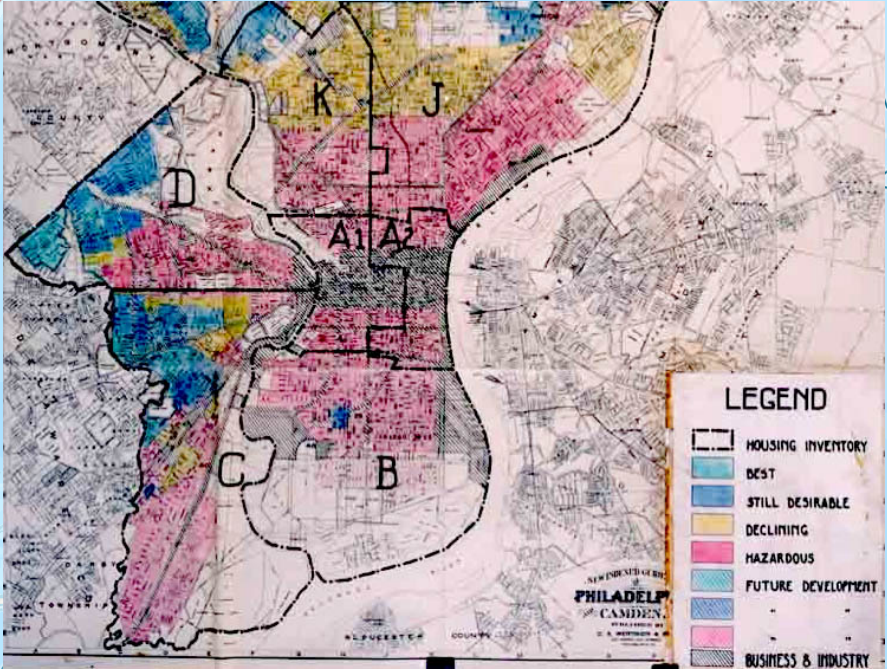
Community economic development, proportionality of justice systems

Many other conditions across a wide range of community concerns

HOLC "Redlining" Maps



g. Prohibition of the occupancy of properties except by the race for which they are intended
 h. Appropriate provisions for enforcement



600mi

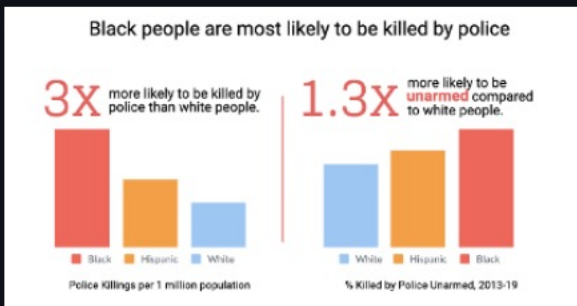


The Flint Water Crisis

6 years ago Flint, MI officials sought to reduce the \$25M deficit plaguing the city, the proposed measure cost the people of Flint much more

By Kelly O'Donnell | August 16, 2020





Source: [Mapping Police Violence](#)

"Police unions are one of the most significant roadblocks to change as demands for reform have mounted in the aftermath of police violence in Ferguson, Baltimore and Minneapolis." - [NY Times](#)

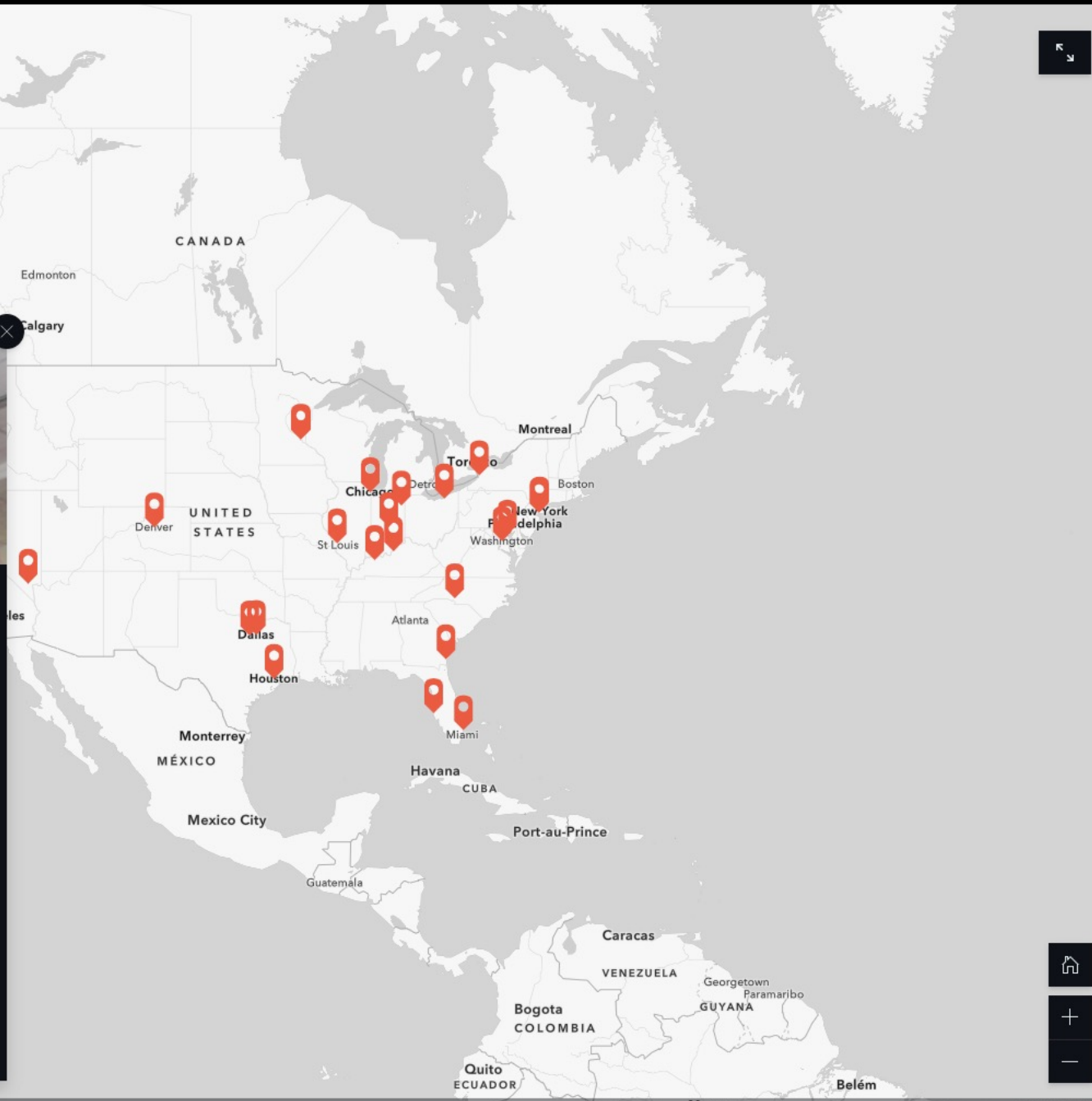


Cleveland, Ohio

Tamir Rice

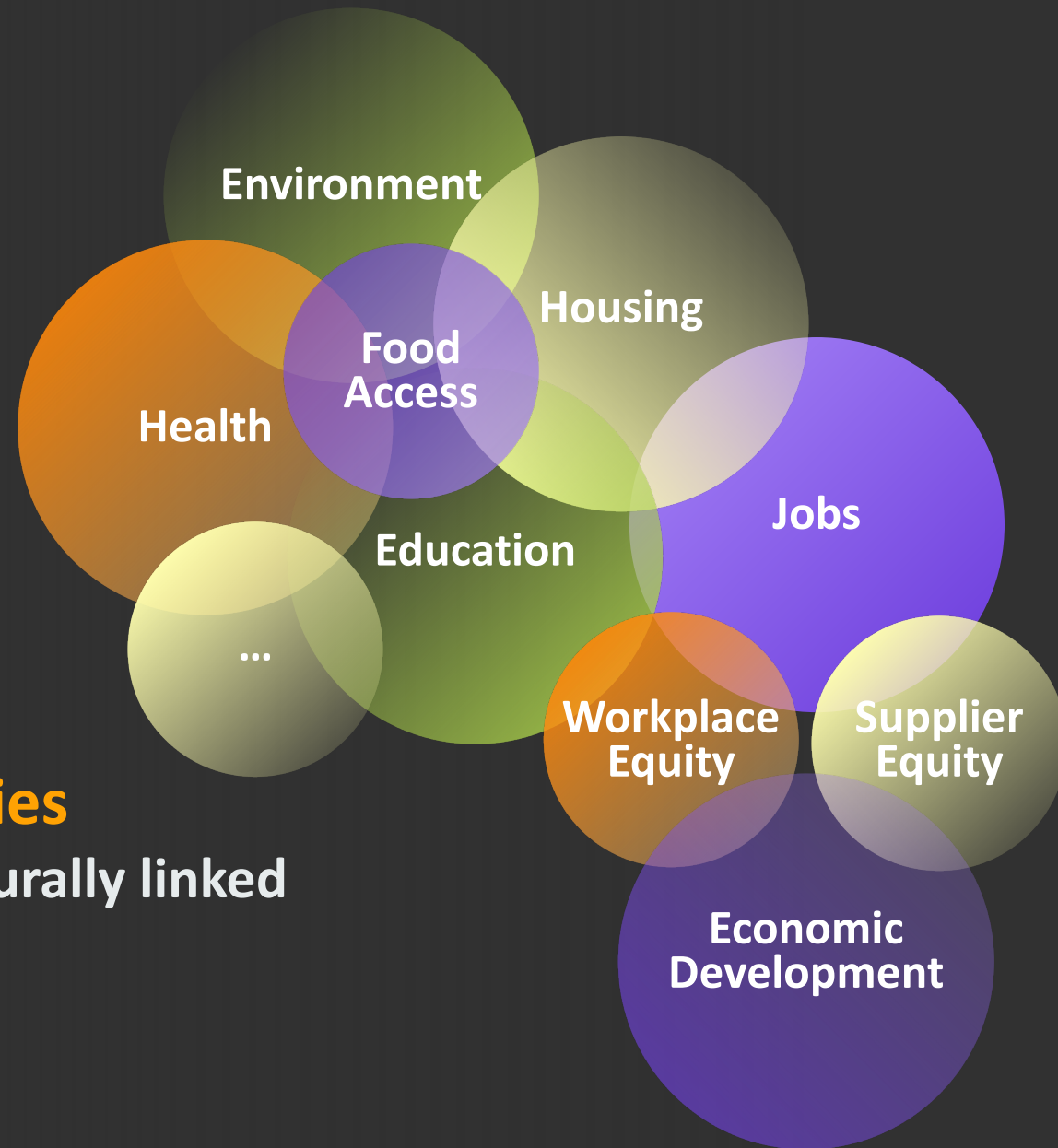
Rice, 12, was alone at the Cudell Recreation Center in Cleveland on Nov. 22, 2014, playing with a replica toy Airsoft gun when a 911 dispatcher received word from a caller that a male was in the park randomly pointing a gun at people.

While the 911 caller told the dispatcher the gun was "probably fake," the detail was never relayed to the two police officers who responded to the call and spotted Rice at a gazebo holding what they say they thought was a real gun. Within two seconds after arriving on the scene, one of the officers, Timothy Loehmann, *opened fire twice*, hitting the boy once in the torso. He died a day later in a hospital.



Racial and Social Inequities

Many intrinsically and structurally linked barriers to equity



The “Chi”

City of Neighborhoods (for Better or Worse)

Economic Powerhouse

Diverse Economy

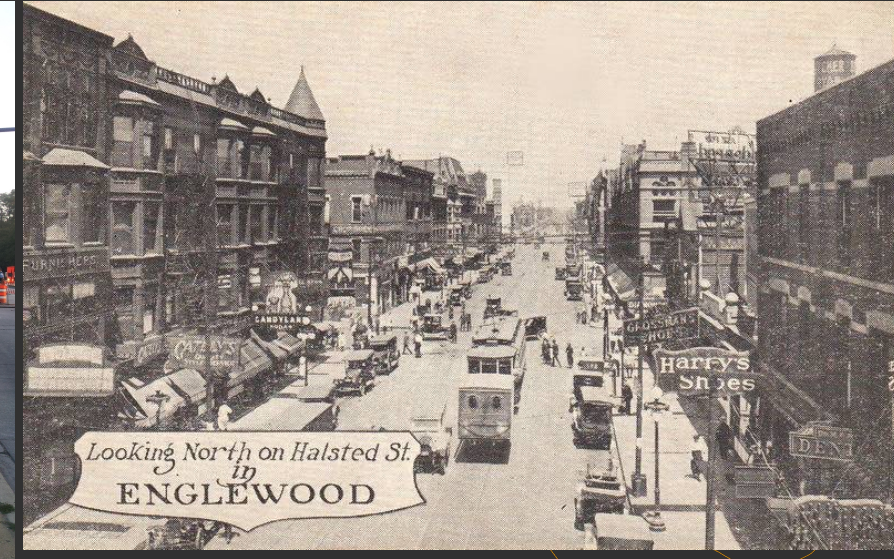
Top Talent

Transportation Hub



The Case of Englewood

- Historically, vibrant neighborhood
- During the 50s/60s, thriving commercial district (retail center)
- Once a stable middle class area
- Policy/Integration that exacerbated segregation
- Now, one of the poorest neighborhoods in Chicago; also one of Chicago's more vibrant neighborhoods in terms of activism, perseverance, and potential




Laquan McDonald



Chicago Race Riots (University of Chicago Online Map)

*It's quite
possible that
the 1919 race
riots actually
formed
Chicago's
neighborhoods.*



“... We are dedicated to working with our users to leverage the true power of geographic and holistic thinking as a framework for understanding to create solutions that ultimately help bring an end to these longstanding injustices.”

– Jack Dangermond

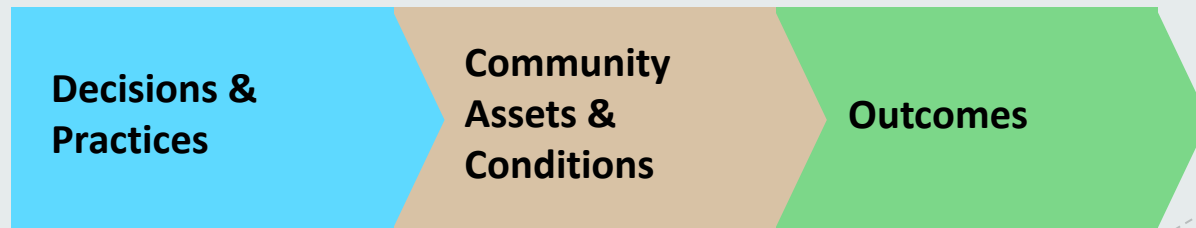
GIS as a Racial Equity Framework

Racial Equity Workflow

- Assess racial and social inequities and drive change for more equitable outcomes



Map and Analyze
Inequities



Operationalize Best
Practices



Manage
Performance

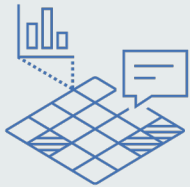
Unhealthy Community Outcome Streams



Healthy Community Outcome Streams



Racial Equity Workflow



Map and Analyze Inequities

Apply a racial equity lens to **reveal and understand inequities in experiences and outcomes** within your community. Locate populations of concern, identify barriers to equality.



GIS as a Racial Equity Framework

Racial Equity Workflow

- Assess racial and social inequities and drive change for more equitable outcomes



**Map and Analyze
Inequities**



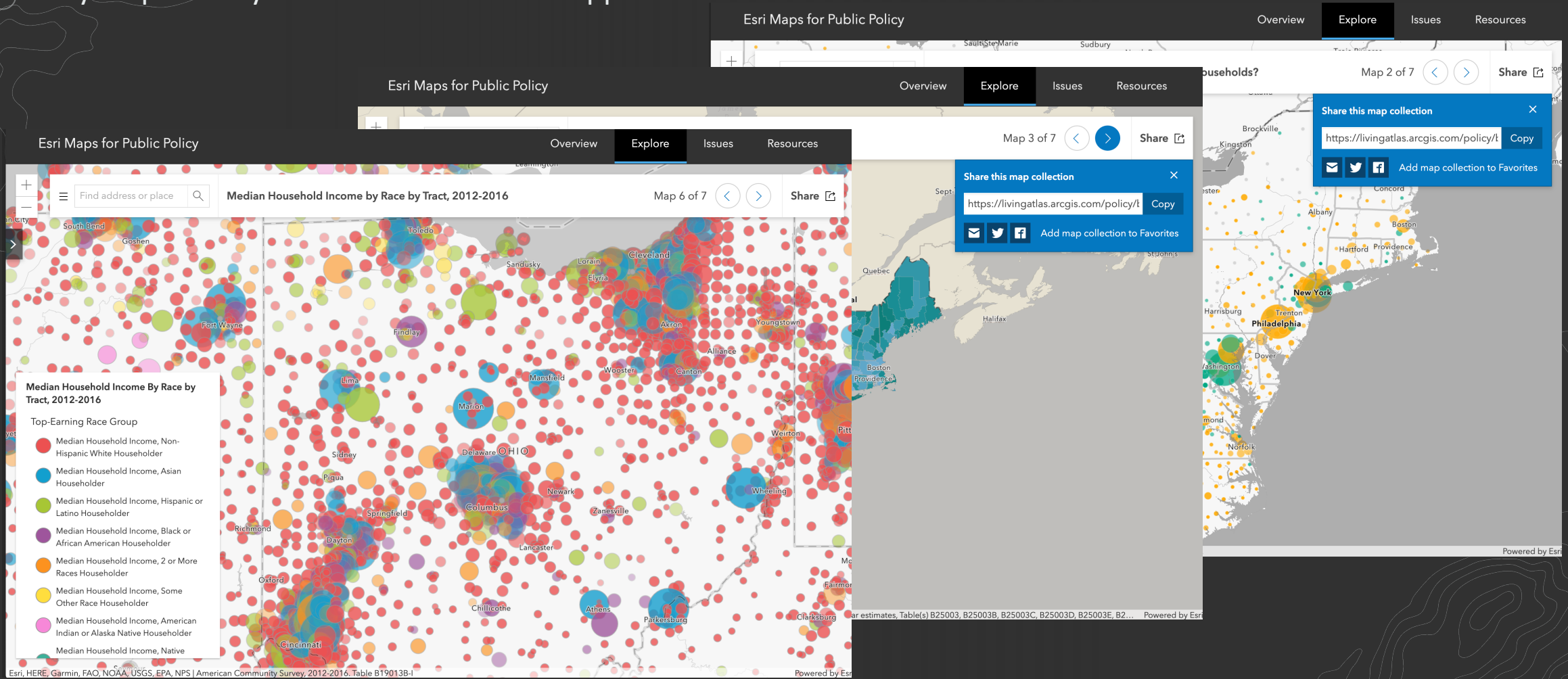
**Operationalize Best
Practices**



**Manage
Performance**

NAACP Project: Living Atlas: Esri Maps for Public Policy

Policy maps clearly show where there are opportunities to intervene.



Police *Accountability* *Roadmap* to Reform

Nationwide Police Budget Survey



Resources

Racial Equity GIS Hub

Visit the Racial Equity GIS Hub to find relevant data layers, user examples, training, solutions, and other resources to help in your work for racial equity.

[Visit the racial equity hub](#) ↗

Racial Equity Community Outreach solution

Local governments can use this solution to communicate progress on racial equity initiatives to the general public and other stakeholders.

[Explore the solution](#) →

Police Transparency solution

The Police Transparency solution can be used to share information and communicate engagement efforts that build trust with the general public and community stakeholders.

[Go to the article](#) →

Apply the racial equity workflow using ArcGIS

Discover how ArcGIS can play a significant role in helping organizations achieve racial equity by applying the racial equity workflow.

[Go to the web course](#) →



City of Chicago: Office of Equity and Racial Justice

"Together We Heal Initiative"



Together We Heal

Thank you for agreeing to share your healing event. Your participation in Together We Heal is helping Chicago move forward in its healing journey. Please complete the information below for each event and click submit. Once submitted, your event information will be published on the city's virtual platform. If you have any questions or need technical assistance, please contact: togetherweheal@cityofchicago.org

Organization Name*
(If no organization, please enter your neighborhood and "resident"; for example "Austin Resident")

Contact Person Name*
(for internal use only)

Contact Person Email*
(for internal use only)

Contact person phone number
(for internal use only)

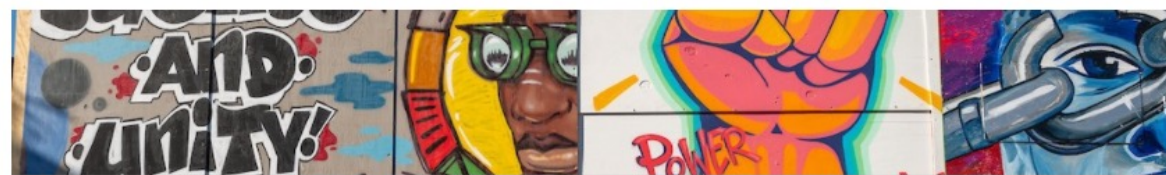
Event*
Event Type (please select one)

Promoting Dialogue: conversations to build understanding and empathy (e.g. group discussion)



Chicago's Vision for Equity Survey

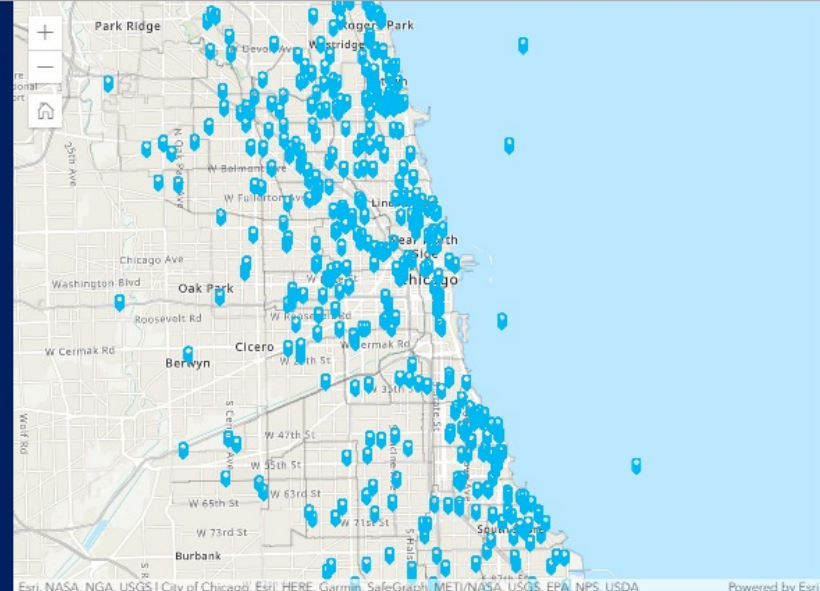
Now more than ever, Chicago needs to build a foundation for equity and healing. Feedback from the TWH Summit and the survey below will be used to create a shared equity definition, statement of principles, and help move Chicago forward in a year of healing. Click below to see how Chicagoans from around the City responded to the survey.



613 Chicagoans have shared their Vision for Racial Healing: [Share Your Vision Here!](#)

Explore Chicago's Vision!
Select a word below to learn.

equality restoration
accountability
fix inner peace safe
relief reconciliation
empowerment hope
repair ? truth share
life justice undoing
time equity
trust freedom unity
growth peace
truth liberation well
change reparations
equity reparation
love



TWH Healing Map

Watch the healing journey grow across Chicago!

Together We Heal | Select an Event Type | All events | Select a Community | All Chicago

7,253 people
174 events

Event list

- O.K.O.R-Our Kids our Responsibility's Seeding Connection**
of people: 45 | Event Date: 8/7/2021
- Common Purpose Facilitating Learning**
of people: 200 | Event Date: 3/22/2021
- B.F.I Productions, Inc. Encouraging Collaboration**
of people: 200 | Event Date: 3/31/2021
- People's Community Development Assn of Chicago, in conjunction with Sinai Chicago Promoting Dialogue**
of people: 400

O.K.O.R-Our Kids our Responsibility's Seeding Connection
Event Date: 8/7/2021
Goal/Purpose: I hope to share common values educate the community on racial inequities, social...
Learned from Event: I learned that we as a people must work earnestly at loving, caring and taking...
Participation #: 45

Demographics

Race	Gender	Age
• White:	• Men: 10	• Under 18: 21
• Black:	• Women: 15	• 18-29: 5
• Latinx: 3	• N/A: 1	• 30 plus: 4
• Native Americans		• Seniors: 10
• Other:		

Common Purpose Facilitating Learning

By Will Jones
Friday, January 29, 2021

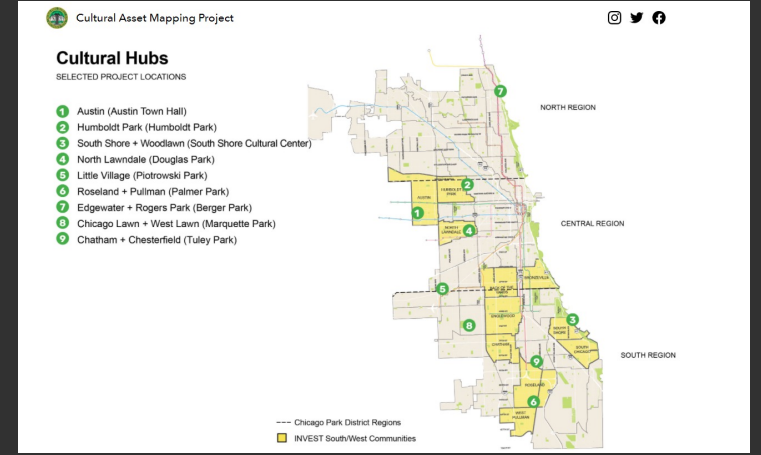
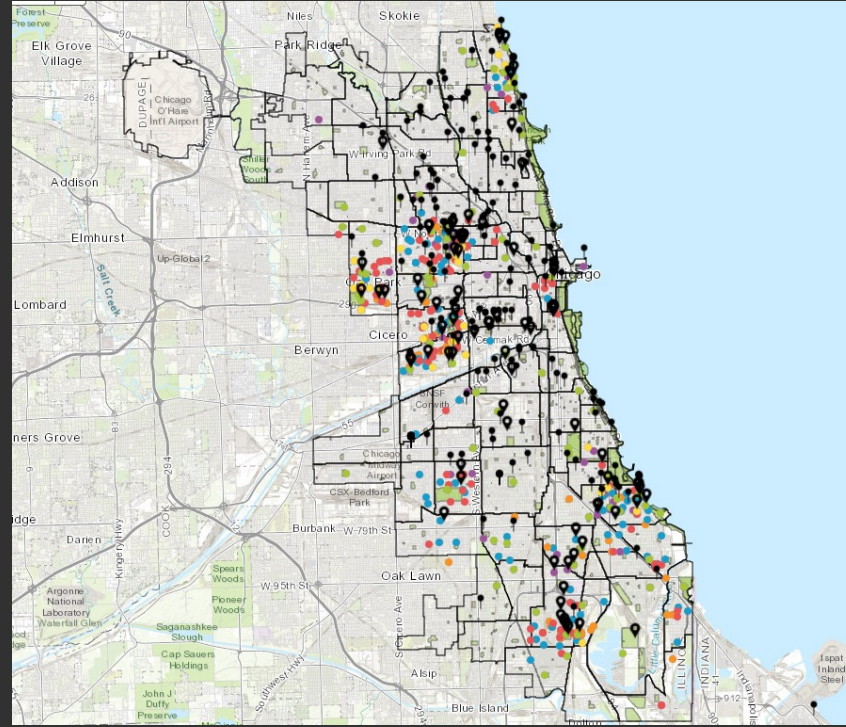
PUBLIC NARRATIVE **TOGETHER WE HEAL**

andid Conversation with The Leaders

Governor J.B. Pritzker
State of Illinois

Mayor Lori Lightfoot
City of Chicago

Chicago Park District: Cultural Asset Mapping Project



2020 C.A.M.P. Artist Cohort

13 artists worked across 9 different neighborhoods to convene communities and work with them to develop stories for the Cultural Asset Map shown above. The artists, working individually and in pairs, will devise creative responses to these workshops, and the collected stories and data they produced for each cultural hub, throughout the Fall and Winter of 2020.

Stay tuned for more updates about their upcoming work!

Rodney Lyons Austin Town Hall Park	Miranda Gonzalez Humboldt Park	Margaret B. Morris South Shore Cultural Center	Tamara Osborn-Isaac Douglas Park	Effendi Monama Plotrowski Park
Eric Hobbsitts Austin Town Hall Park	Josue Blau Humboldt Park	Rashida Osman South Shore Cultural Center	Robert Zemoita Douglas Park	Jen Doree Reyes Plotrowski Park
Chris Sant Palmer Park + Tuley Park	Anders Demoshowitz Berger Park	Verica Quillen Marquette Park		

Connect and create.

C.A.M.P. is for community members and culture workers to better understand their resources, networks, and spaces for cultural production. C.A.M.P. aims to be a tool for cultural planning, collaboration, and activation at the neighborhood level.

Another important goal of this database effort is to provide a search tool for finding arts and community organizations, artists, businesses, schools, libraries, venues, parks, and other available resources for cultural projects.

EXPLORE

Browse through data that has been integrated to date.

DISCOVER + ADD

Discover ways to use and add information to this data for your own cultural projects.

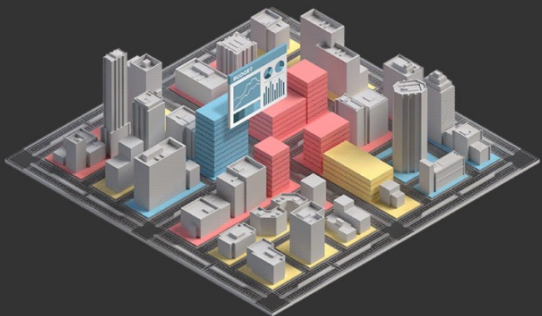
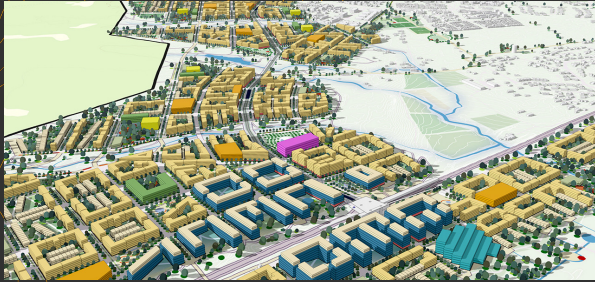
IMAGINE

Develop new ideas for cultural programming, events, partnerships, infrastructure, and/or networks.

PLAN

Bring your community vision to life through creative experimentation and vibrant project collaborations.





INVEST South/West

Target Neighborhoods

INVEST South/West is an unprecedented equitable development strategy under Mayor Lightfoot to revitalize 10 historic neighborhoods on Chicago's South and West sides.

[Learn more](#)



