

PARENT'S GUIDE STUDY AWAY

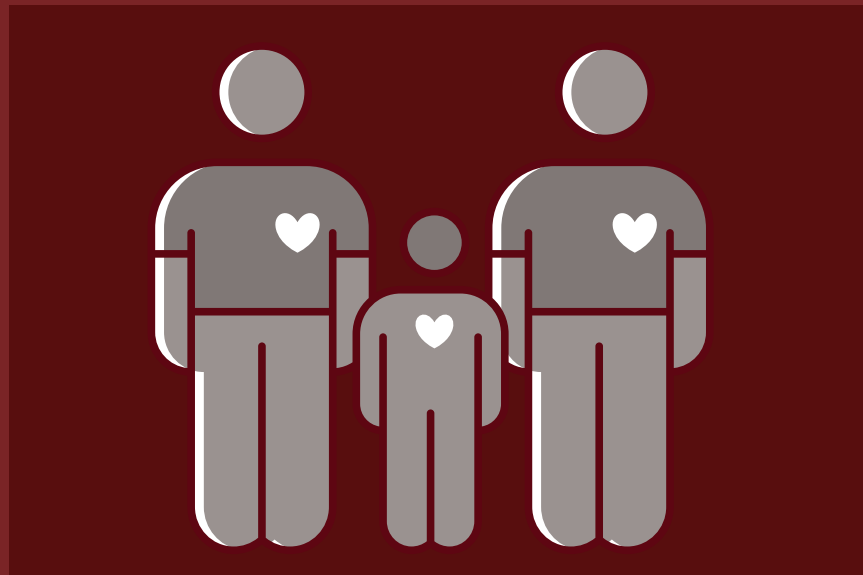


ARTICLES

Vol. 1 →
Why Study Away?

Vol. 2 →
Process for
Studying Away

Vol. 3 →
Common Parent
Questions



COMMON PARENT QUESTIONS

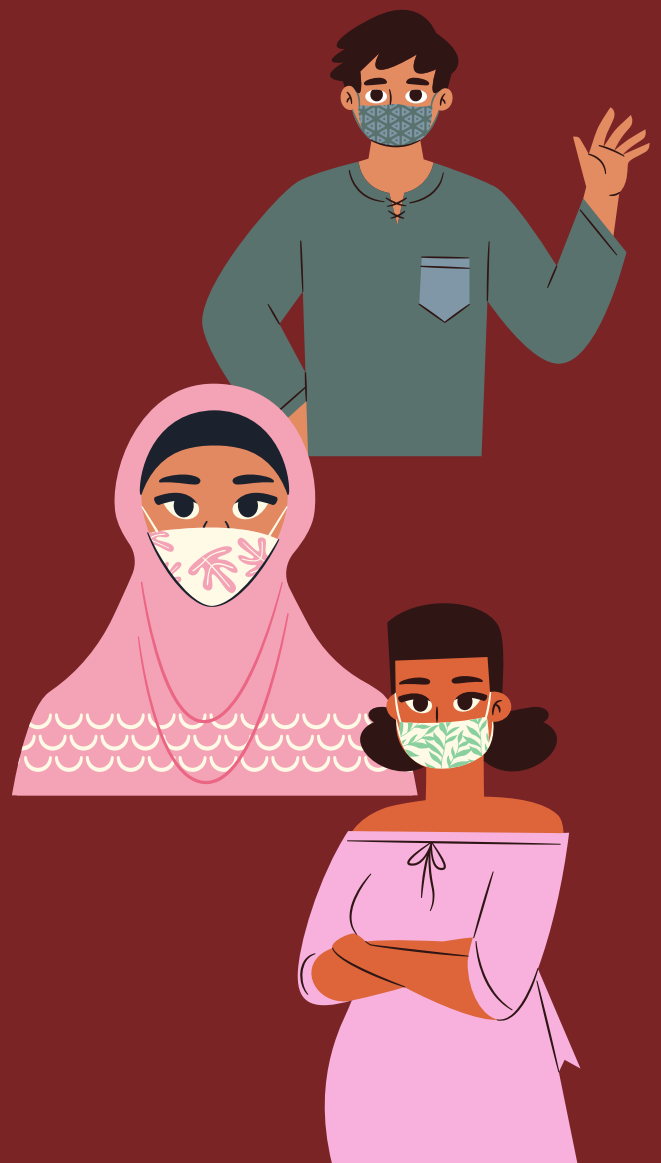
Addressing some of the most common questions parents have when sending their students to study away.

Studying away while attending the University of Redlands is an opportunity we want all students to have regardless of their background. We also believe that every student has a unique set of skills and experiences that can represent the University of Redlands in a global setting. This volume is meant to address some of the most common questions parents have about study away.

Some of the most common topics parents ask about are whether study away fits into a student's academic plan and still allows them to graduate on time, student health and safety while studying away, housing on study away programs and other financial considerations regarding study away costs. We will address all of these topics and point to additional resources on our website. www.redlands.edu/casstudyaway/

HEALTH & SAFETY

The health and safety of our study away students is of utmost importance to the U of R. The University works closely with all of our study away programs and maintains regular communication with our partners regarding the health and safety of our students. The Study Away Office also consults OSAC (Overseas Security Advisory Council), the U.S. Department of State, CDC and other entities to monitor country specific information. Students register in the STEP (Smart Traveler Enrollment Program) to get updates on the country where they will be studying and also attend required pre-departure orientations both at Redlands and on their program to learn more about important health and safety measures. For more information on our Health & Safety policies visit: www.redlands.edu/study/study-away/cas-study-away/resources/health-safety



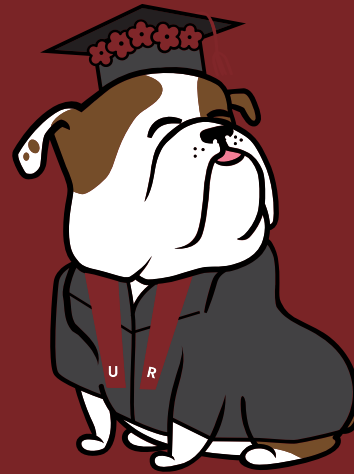
HOUSING

All students participating on a CAS Study Away program are required to live in program provided housing. Students are not allowed to live in independent housing. Housing options vary by program and may include one or more of the following: homestays, student residence halls and/or student apartments.



LIVING COSTS WHILE STUDYING AWAY

- Our in-depth description outlining the costs involved when studying away is included in Volume 2: Process for Studying Away.
- It is important for students to notify their banks of their study away plans and to ask about any possible bank and/or international transaction fees.
- Students should also be aware of **exchange rates and the cost of living for their study away destination. Monitor exchange rates at XE.com** and learn about the cost of living differences between Redlands (or their home address) and their study away country at Numbeo's website has many other indicators to compare with their study away country: quality of life, healthcare, crime, traffic, and pollution. **www.numbeo.com/cost-of-living**



FINISHING DEGREE ON TIME

- As part of the study away application process, students are required to **meet with their academic advisor**, discuss the best program for their academic interests for approval to study away.
- Before departing for study away, students must complete a **Study Away Approval request form** to make sure their courses taken abroad will transfer and fulfill academic requirements. For more information visit: **www.redlands.edu/study/study-away/cas-study-away/resources/academics/**

RESOURCES FOR STUDENTS

SCHOLARSHIPS →

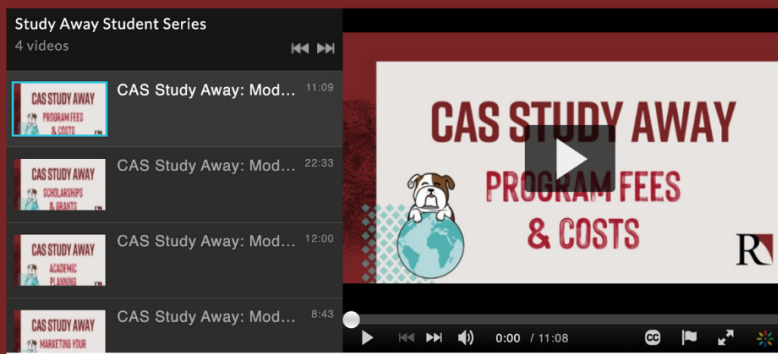
tinyurl.com/yk8zbn5

CAS STUDY AWAY OFFICE INFORMATION SESSIONS →

tinyurl.com/r467d2h2

STUDENT VIDEO SERIES →

www.redlands.edu/study/study-away/cas-study-away/resources/workshops-recordings/



We have a Study Away Student series led by our First-Gen Study Away Ambassador Melina Estrada!

MODULES INCLUDE →

- Program Fees & Costs
- Scholarships & Grants
- Academic Planning
- Marketing Your Study Away Experience

Contact →

Andrea Muilenburg

Director

→ 909.748.8717

→ andrea_muilenburg@redlands.edu

Melissa Modesitt

Program Coordinator

→ 909.748.8044

→ melissa_modesitt@redlands.edu